

SYNAPTONEMAL COMPLEX PROTEIN 2 RABBIT PAB

Cat.#: N225170

Product Name: Anti-Synaptonemal Complex Protein 2 Rabbit pAb

Synonyms: SYCP2; SCP2; Synaptonemal complex protein 2; SCP-2; Synaptonemal complex lateral element protein; hsSCP2

UNIPROT ID: Q9BX26

Background: Major component of the axial/lateral elements of synaptonemal complexes (SCS) during meiotic prophase.

Immunogen: Synthesized peptide derived from the Internal region of human SCP-2.

Applications: WB,ELISA

Recommended Dilutions: WB: 1/500-1/1000 ELISA: 1/10000

Host Species: Rabbit

Clonality: Rabbit Polyclonal

Clone ID: -

MW: Calculated MW: 176 kDa; Observed MW: 176 kDa

Isotype: IgG

Purification: Affinity Purified

Species Reactivity: Human

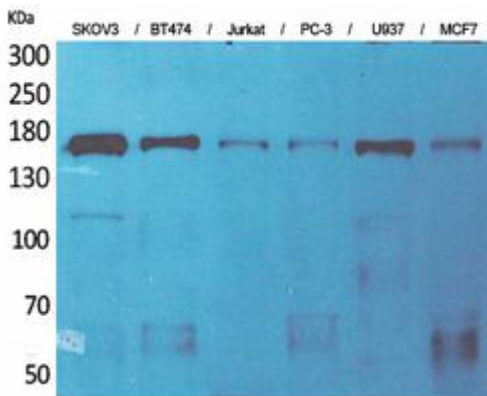
Conjugation: Unconjugated

Modification: Unmodified

Constituents: PBS (without Mg²⁺ and Ca²⁺), pH 7.3 containing 50% glycerol, 0.5% BSA and 0.02% sodium azide

Research Areas: Cell Biology

Storage & Shipping: Store at -20°C. Avoid repeated freezing and thawing



Western blot analysis of Synaptonemal Complex Protein 2 in SKOV-3, BT474, Jurkat, PC-3, U937, MCF-7 lysates using Synaptonemal Complex Protein 2 antibody.