

SYNAPSIN 1 RABBIT PAB

Cat.#: N225406

Product Name: Anti-Synapsin 1 Rabbit pAb

Synonyms: SYNI; Synapsin-1; Brain protein 4.1; Synapsin I

UNIPROT ID: P17600

Background: This gene is a member of the synapsin gene family. Synapsins encode neuronal phosphoproteins which associate with the cytoplasmic surface of synaptic vesicles. Family members are characterized by common protein domains, and they are implicated in synaptogenesis and the modulation of neurotransmitter release, suggesting a potential role in several neuropsychiatric diseases.

Immunogen: The antiserum was produced against synthesized peptide derived from human Synapsin. AA range:3-52

Applications: WB,IHC-F,IHC-P,ICC/IF,ELISA

Recommended Dilutions: WB: 1/500-1/1000 IHC: 1/50-1/100 IF: 1/50-1/200
ELISA: 1/10000

Host Species: Rabbit

Clonality: Rabbit Polyclonal

Clone ID: -

MW: Calculated MW: 74 kDa; Observed MW: 74 kDa

Isotype: IgG

Purification: Affinity Purified

Species Reactivity: Human,Mouse,Rat

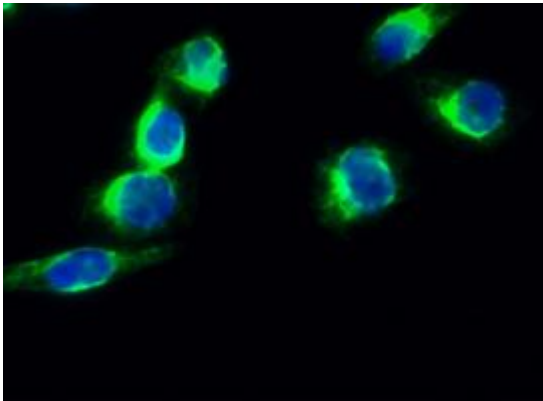
Conjugation: Unconjugated

Modification: Unmodified

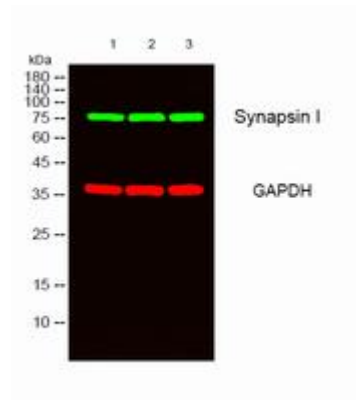
Constituents: PBS (without Mg²⁺ and Ca²⁺), pH 7.3 containing 50% glycerol, 0.5% BSA and 0.02% sodium azide

Research Areas: Neuroscience

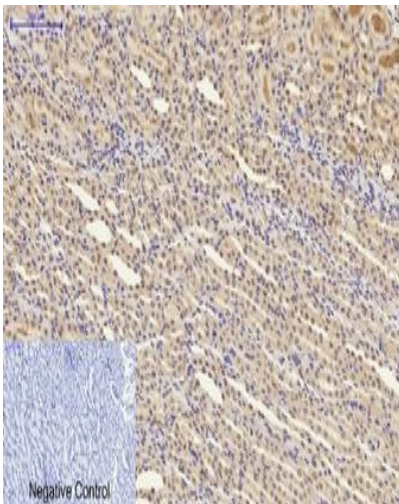
Storage & Shipping: Store at -20°C. Avoid repeated freezing and thawing



Immunofluorescence analysis of Synapsin 1 in HeLa using Synapsin 1 antibody (green)



Western blot analysis of Synapsin 1 in HeLa, 293, 3T3 lysates using Synapsin 1 antibody.



Immunohistochemistry analysis of paraffin-embedded rat kidney tissue using Synapsin 1 antibody. High-pressure and temperature Sodium Citrate pH 6.0 was used for antigen retrieval.