

SURFEIT LOCUS PROTEIN 4 RABBIT MAB

Cat.#: N263105

Product Name: Anti-Surfeit Locus Protein 4 Rabbit Monoclonal Antibody

Synonyms: ERV29

UNIPROT ID: O15260

Background: This gene is located in the surfait gene cluster, which is comprised of very tightly linked housekeeping genes that do not share sequence similarity. The encoded protein is a conserved integral membrane protein that interacts with endoplasmic reticulum-Golgi intermediate compartment proteins. Disruption of this gene results in reduced numbers of endoplasmic reticulum-Golgi intermediate compartment clusters and redistribution of coat protein I to the cytosol. Alternate splicing results in multiple transcript variants.

Immunogen: A synthetic peptide of human SURF4

Applications: WB, ICC/IF

Recommended Dilutions: WB: 1/500-1/1000 IF: 1/50-1/200

Host Species: Rabbit

Clonality: Rabbit Monoclonal

Clone ID: R07-1F1

MW: Calculated MW: 30 kDa; Observed MW: 30 kDa

Isotype: IgG

Purification: Affinity Purified

Species Reactivity: Human, Mouse, Rat

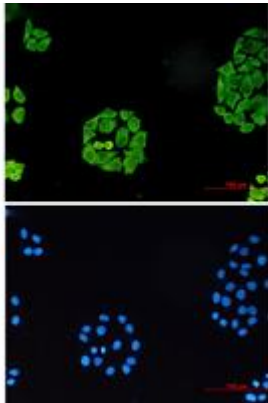
Conjugation: Unconjugated

Modification: Unmodified

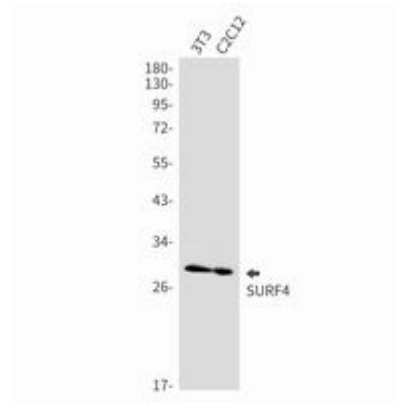
Constituents: PBS (without Mg²⁺ and Ca²⁺), pH 7.3 containing 50% glycerol, 0.5% BSA and 0.02% sodium azide

Research Areas: Tags & Cell Markers

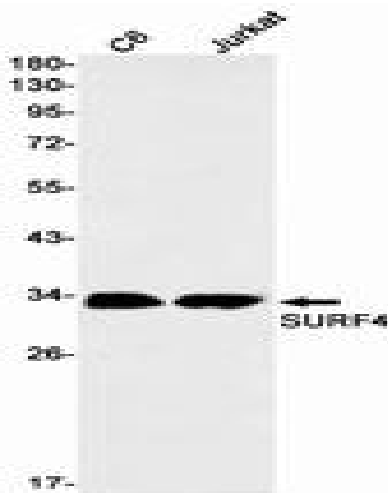
Storage & Shipping: Store at -20°C. Avoid repeated freezing and thawing



Immunocytochemistry analysis of SURF4 (green) in Hela using SURF4 antibody, and DAPI (blue)



Western blot analysis of SURF4 in 3T3, C2C12 lysates using Surfeit Locus Protein 4 antibody.



Western blot analysis of SURF4 in C6, Jurkat lysates using SURF4 antibody.