

## STK32B RABBIT PAB

**Cat.#:** S219385

**Product Name:** Anti-STK32B Rabbit Polyclonal Antibody

**Synonyms:** STK32; STKG6; YANK2; HSA250839

**UNIPROT ID:** Q9NY57 (Gene Accession - BC038238 )

**Background:** This gene encodes a serine-threonine protein kinase. Serine-threonine kinases transfer phosphate molecules to the oxygen atoms of serine and threonine. A genomic deletion affecting this gene has been associated with Ellis-van Creveld syndrome, an autosomal recessive skeletal dysplasia. Alternative splicing results in multiple transcript variants.

**Immunogen:** Fusion protein of human STK32B

**Applications:** ELISA, WB, IHC

**Recommended Dilutions:** IHC: 100-300;WB: 1000-5000;ELISA: 5000-10000

**Host Species:** Rabbit

**Clonality:** Rabbit Polyclonal

**Isotype:** Immunogen-specific rabbit IgG

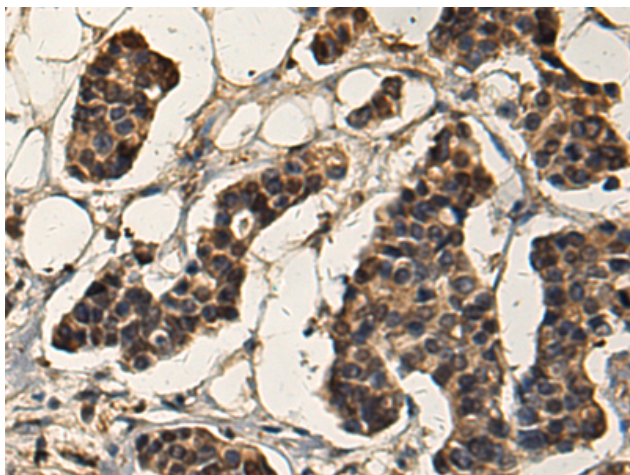
**Purification:** Antigen affinity purification

**Species Reactivity:** Human, Mouse

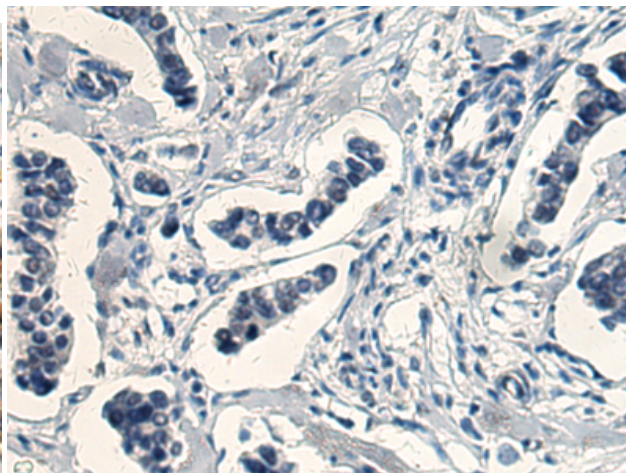
**Constituents:** PBS (without Mg<sup>2+</sup> and Ca<sup>2+</sup>), pH 7.4, 150 mM NaCl, 0.05% Sodium Azide and 40% glycerol

**Research Areas:** Signal Transduction

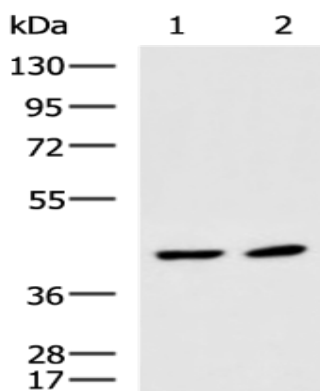
**Storage & Shipping:** Store at -20°C. Avoid repeated freezing and thawing



Immunohistochemistry analysis of paraffin embedded Human breast cancer tissue using 219385(STK32B Antibody) at a dilution of 1/160(Cytoplasm and Nucleus).



In comparison with the IHC on the left, the same paraffin-embedded Human breast cancer tissue is first treated with the fusion protein and then with 219385(Anti-STK32B Antibody) at dilution 1/160.



Gel: 8%SDS-PAGE, Lysate: 40 µg;

Lane 1-2: Mouse liver tissue and Mouse brain tissue lysates;

Primary antibody: 219385(STK32B Antibody) at dilution 1/1000;

Secondary antibody: HRP-conjugated Goat anti rabbit IgG at 1/5000 dilution;

Exposure time: 3 minutes