

STING RABBIT PAB

Cat.#: N225928

Product Name: Anti-STING Rabbit pAb

Synonyms: ERIS; MITA; MPYS; SAVI; NET23; STING; hMITA; hSTING; STING-beta; Transmembrane Protein 173

UNIPROT ID: Q86WV6

Background: Facilitator of innate immune signaling that promotes the production of type I interferon (IFN-alpha and IFN-beta). Innate immune response is triggered in response to non-CpG double-stranded DNA from viruses and bacteria delivered to the cytoplasm.

Immunogen: A synthesized peptide derived from human TMEM173

Applications: WB, ICC/IF, FC

Recommended Dilutions: WB: 1/500-1/1000 IF: 1/50-1/200 FC: 1/50-1/100

Host Species: Rabbit

Clonality: Rabbit Polyclonal

Clone ID: -

MW: Calculated MW: 42 kDa; Observed MW: 37 kDa

Isotype: IgG

Purification: Affinity Chromatography

Species Reactivity: Human

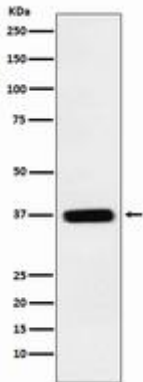
Conjugation: Unconjugated

Modification: Unmodified

Constituents: PBS (without Mg²⁺ and Ca²⁺), pH 7.3 containing 50% glycerol, 0.5% BSA and 0.02% sodium azide

Research Areas: Immunology

Storage & Shipping: Store at -20°C. Avoid repeated freezing and thawing



Western blot analysis of TMEM173 in HeLa lysates using Transmembrane Protein 173 antibody.