

STAT5B RABBIT MAB

Cat.#: N263562

Product Name: Anti-STAT5b Rabbit Monoclonal Antibody

Synonyms: STAT5

UNIPROT ID: P51692

Background: Stat5 is activated in response to a wide variety of ligands including IL-2, GM-CSF, growth hormone and prolactin. Stat5 is constitutively active in some leukemic cell types. Phosphorylated Stat5 is found in some endothelial cells treated with IL-3, which suggests its involvement in angiogenesis and cell motility. Stat5a and Stat5b are independently regulated and activated in various cell types.

Immunogen: Recombinant protein of human STAT5b

Applications: WB,IHC-F,IHC-P,ICC/IF,IP

Recommended Dilutions: WB: 1/500-1/1000 IHC: 1/50-1/100 IF: 1/50-1/200 IP: 1/20

Host Species: Rabbit

Clonality: Rabbit Monoclonal

Clone ID: R08-218

MW: Calculated MW: 90 kDa; Observed MW: 90 kDa

Isotype: IgG

Purification: Affinity Purified

Species Reactivity: Human,Mouse,Rat

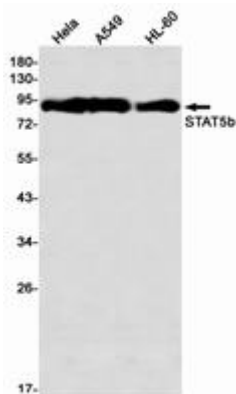
Conjugation: Unconjugated

Modification: Unmodified

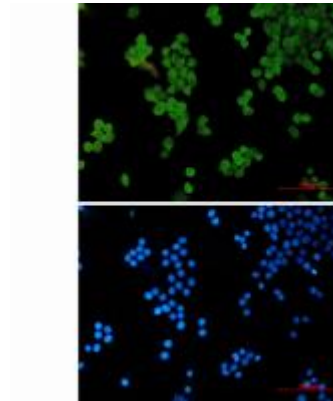
Constituents: PBS (without Mg²⁺ and Ca²⁺), pH 7.3 containing 50% glycerol, 0.5% BSA and 0.02% sodium azide

Research Areas: Signal Transduction

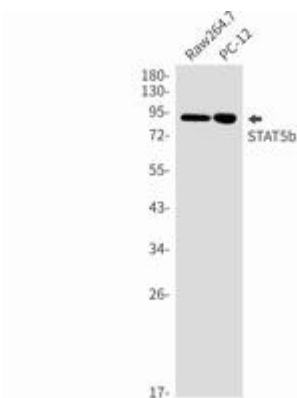
Storage & Shipping: Store at -20°C. Avoid repeated freezing and thawing



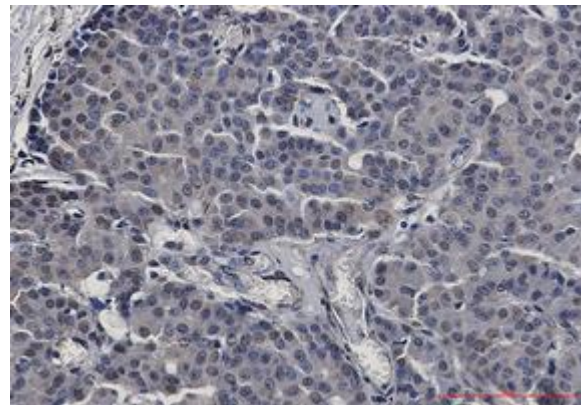
Western blot analysis of STAT5b in HeLa, A549, HL-60 lysates using STAT5b antibody



Immunocytochemistry analysis of STAT5b (green) in HeLa using STAT5b antibody, and DAPI (blue).



Western blot analysis of STAT5b in Raw264.7, PC-12 lysates using STAT5b antibody.



Immunohistochemistry analysis of paraffin-embedded Human breast cancer using STAT5b antibody. High-pressure and temperature Sodium Citrate pH 6.0 was used for antigen retrieval.