

STAT3 RABBIT PAB

Cat.#: N225053

Product Name: Anti-STAT3 Rabbit pAb

Synonyms: STAT3; APRF; Signal transducer and activator of transcription 3; Acute-phase response factor

UNIPROT ID: P40763

Background: The protein encoded by this gene is a member of the STAT protein family. In response to cytokines and growth factors, STAT family members are phosphorylated by the receptor associated kinases, and then form homo- or heterodimers that translocate to the cell nucleus where they act as transcription activators.

Immunogen: The antiserum was produced against synthesized peptide derived from human STAT3. AA range:694-743

Applications: WB,IHC-F,IHC-P,ICC/IF,ELISA

Recommended Dilutions: WB: 1/500-1/1000 IHC: 1/50-1/100 IF: 1/50-1/200 ELISA: 1/10000

Host Species: Rabbit

Clonality: Rabbit Polyclonal

Clone ID: -

MW: Calculated MW: 88 kDa; Observed MW: 88 kDa

Isotype: IgG

Purification: Affinity Purified

Species Reactivity: Human,Mouse,Rat

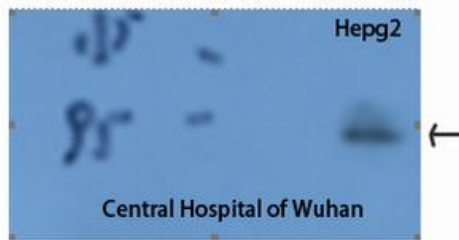
Conjugation: Unconjugated

Modification: Unmodified

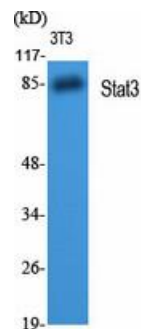
Constituents: PBS (without Mg²⁺ and Ca²⁺), pH 7.3 containing 50% glycerol, 0.5% BSA and 0.02% sodium azide

Research Areas: Signal Transduction

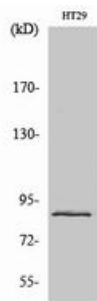
Storage & Shipping: Store at -20°C. Avoid repeated freezing and thawing



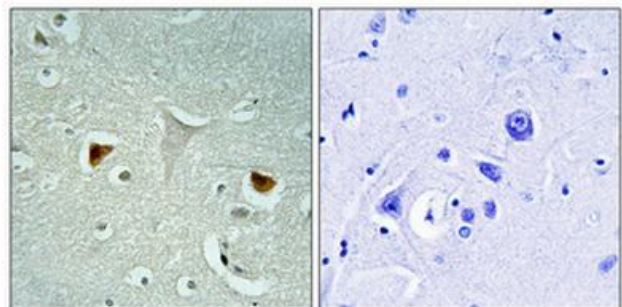
Western blot analysis of STAT3 in Hepg2 lysates using STAT3 antibody.



Western blot analysis of STAT3 in various lysates using STAT3 antibody.



Western blot analysis of STAT3 in NIH3T3 lysates using Stat3 antibody.



Immunohistochemistry analysis of paraffin-embedded Human brain using STAT3 antibody. High-pressure and temperature Tris-EDTA pH 8.0 was used for antigen retrieval. Negative control (right) obtained from antibody was preabsorbed by immunogen peptide.