

STAT2 RABBIT MAB

Cat.#: N263560

Product Name: Anti-STAT2 Rabbit Monoclonal Antibody

Synonyms: AW496480; 1600010G07Rik

UNIPROT ID: Q9WVL2

Background: Signal transducer and activator of transcription that mediates signaling by type I interferons (IFN- α and IFN- β). Following type I IFN binding to cell surface receptors, Jak kinases (TYK2 and JAK1) are activated, leading to tyrosine phosphorylation of STAT1 and STAT2.

Immunogen: A synthetic peptide of mouse STAT2

Applications: WB,IHC-P

Recommended Dilutions: WB: 1/500-1/1000 IHC: 1/50-1/100

Host Species: Rabbit

Clonality: Rabbit Monoclonal

Clone ID: R01-2F6

MW: Calculated MW: 105 kDa; Observed MW: 113 kDa

Isotype: IgG

Purification: Affinity Purified

Species Reactivity: Human,Mouse

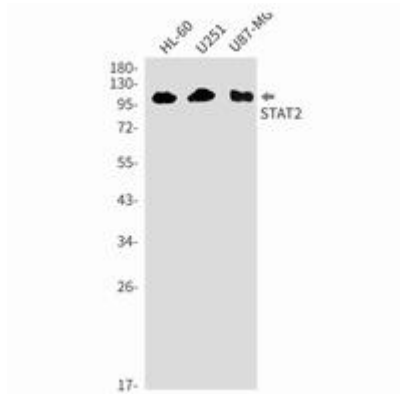
Conjugation: Unconjugated

Modification: Unmodified

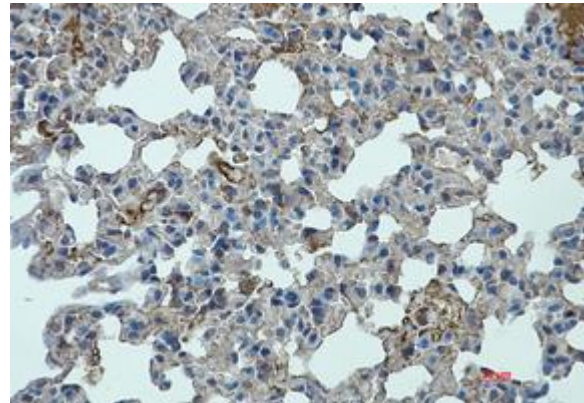
Constituents: PBS (without Mg²⁺ and Ca²⁺), pH 7.3 containing 50% glycerol, 0.5% BSA and 0.02% sodium azide

Research Areas: Signal Transduction

Storage & Shipping: Store at -20°C. Avoid repeated freezing and thawing



Western blot analysis of STAT2 in HL-60, U251, U87-MG lysates using STAT2 antibody.



Immunohistochemistry analysis of paraffin-embedded mouse lung using STAT2 antibody. High-pressure and temperature Sodium Citrate pH 6.0 was used for antigen retrieval.