

STAT1 RABBIT PAB

Cat.#: S216259

Product Name: Anti-STAT1 Rabbit Polyclonal Antibody

Synonyms: ISGF-3, STAT91

UNIPROT ID: P42224 (Gene Accession - BC002704)

Background: The protein encoded by this gene is a member of the STAT protein family. In response to cytokines and growth factors, STAT family members are phosphorylated by the receptor associated kinases, and then form homo- or heterodimers that translocate to the cell nucleus where they act as transcription activators. This protein can be activated by various ligands including interferon- α , interferon- γ , EGF, PDGF and IL6. This protein mediates the expression of a variety of genes, which is thought to be important for cell viability in response to different cell stimuli and pathogens. Two alternatively spliced transcript variants encoding distinct isoforms have been described.

Immunogen: Fusion protein of human STAT1

Applications: ELISA, IHC

Recommended Dilutions: IHC: 25-100; ELISA: 1000-2000

Host Species: Rabbit

Clonality: Rabbit Polyclonal

Isotype: Immunogen-specific rabbit IgG

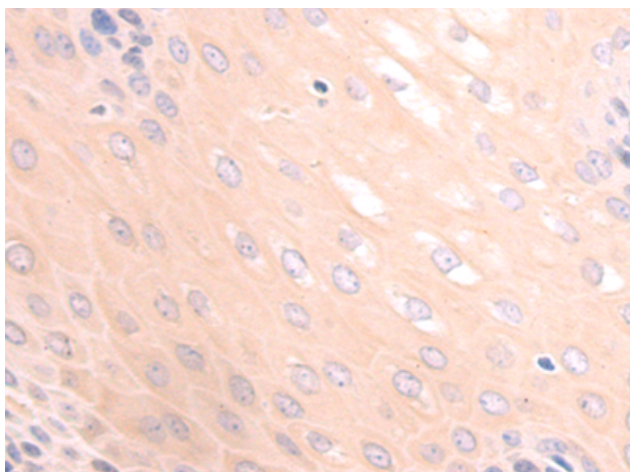
Purification: Antigen affinity purification

Species Reactivity: Human, Mouse

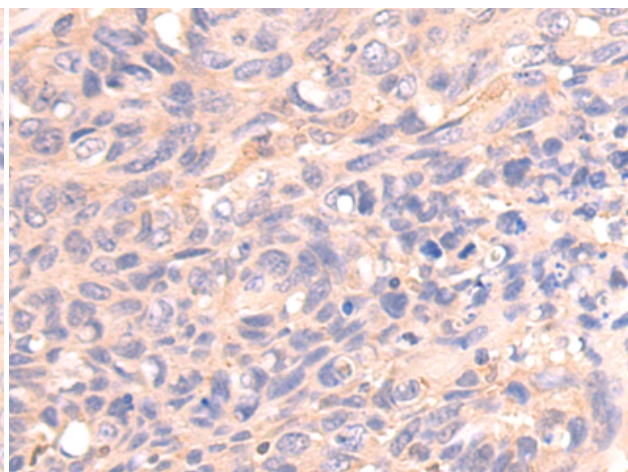
Constituents: PBS (without Mg²⁺ and Ca²⁺), pH 7.4, 150 mM NaCl, 0.05% Sodium Azide and 40% glycerol

Research Areas: Signal Transduction, Epigenetics and Nuclear Signaling

Storage & Shipping: Store at -20°C. Avoid repeated freezing and thawing



Immunohistochemistry analysis of paraffin-embedded Human cervical cancer tissue using 216259(STAT1 Antibody) at a dilution of 1/20(Cytoplasm or Nucleus).



Immunohistochemistry analysis of paraffin-embedded Human colon cancer tissue using 216259(Anti-STAT1 Antibody) at a dilution of 1/20.