

## STAT1 (9D6) MOUSE MAB

**Cat.#:** N261301

**Product Name:** Anti-STAT1 (9D6) Mouse Monoclonal Antibody

**Synonyms:** STAT1; Signal transducer and activator of transcription 1-  
alpha/beta; Transcription factor ISGF-3 components p91/p84

**UNIPROT ID:** P42224

**Background:** The protein encoded by this gene is a member of the STAT protein family. In response to cytokines and growth factors, STAT family members are phosphorylated by the receptor associated kinases, and then form homo- or heterodimers that translocate to the cell nucleus where they act as transcription activators.

**Immunogen:** Synthetic peptide conjugated to KLH.

**Applications:** IHC-P

**Recommended Dilutions:** IHC: 1/50-1/100

**Host Species:** Mouse

**Clonality:** Mouse Monoclonal

**Clone ID:** 9D6-7C9-8F5

**MW:** -

**Isotype:** IgG1

**Purification:** Affinity Purified

**Species Reactivity:** Human,Rat,Mouse

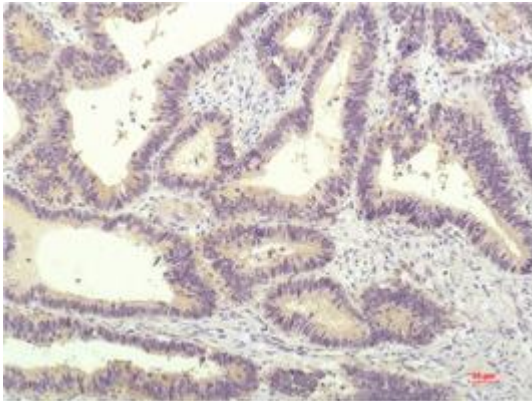
**Conjugation:** Unconjugated

**Modification:** Unmodified

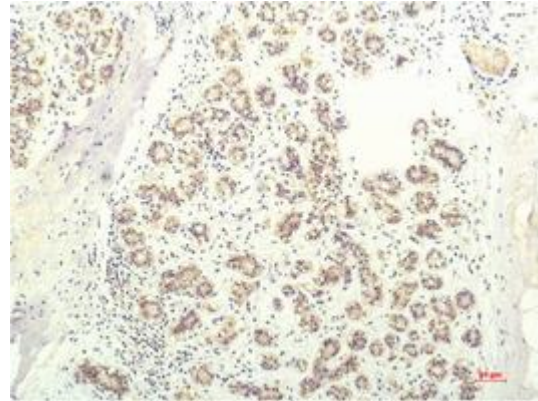
**Constituents:** PBS (without Mg<sup>2+</sup> and Ca<sup>2+</sup>), pH 7.3 containing 50% glycerol, 0.5% BSA and 0.02% sodium azide

**Research Areas:** Signal Transduction

**Storage & Shipping:** Store at -20°C. Avoid repeated freezing and thawing



Immunohistochemical analysis of paraffin-embedded Human tonsils using STAT1 (9D6) antibody. High-pressure and temperature Sodium Citrate pH 6.0 was used for antigen retrieval.



Immunohistochemistry analysis of paraffin-embedded Human Breast Carcinoma Tissue using STAT1 (9D6) antibody. High-pressure and temperature Sodium Citrate pH 6.0 was used for antigen retrieval.