

## STAT1 (6C2) MOUSE MAB

**Cat.#:** N261116

**Product Name:** Anti-STAT1 (6C2) Mouse Monoclonal Antibody

**Synonyms:** STAT1; Signal transducer and activator of transcription 1-  
alpha/beta; Transcription factor ISGF-3 components p91/p84

**UNIPROT ID:** P42224

**Background:** The protein encoded by this gene is a member of the STAT protein family. In response to cytokines and growth factors, STAT family members are phosphorylated by the receptor associated kinases, and then form homo- or heterodimers that translocate to the cell nucleus where they act as transcription activators.

**Immunogen:** Purified recombinant human STAT1 protein fragments expressed in E.coli

**Applications:** WB,IP

**Recommended Dilutions:** WB: 1/500-1/1000 IP: 1/20

**Host Species:** Mouse

**Clonality:** Mouse Monoclonal

**Clone ID:** 6C2-F7-D12

**MW:** Calculated MW: 87 kDa; Observed MW: 91 kDa

**Isotype:** IgG2a

**Purification:** Affinity Purified

**Species Reactivity:** Human,Monkey

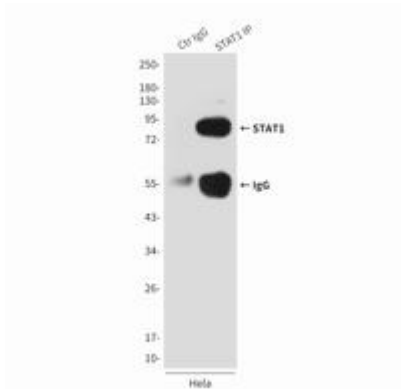
**Conjugation:** Unconjugated

**Modification:** Unmodified

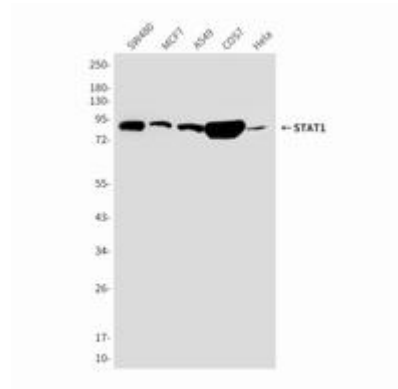
**Constituents:** PBS (without Mg<sup>2+</sup> and Ca<sup>2+</sup>), pH 7.3 containing 50% glycerol, 0.5% BSA and 0.02% sodium azide

**Research Areas:** Signal Transduction

**Storage & Shipping:** Store at -20°C. Avoid repeated freezing and thawing



Immunoprecipitation analysis of STAT1 (6C2) in HeLa lysates using STAT1 antibody.



Western blot analysis of STAT1 in HeLa, MCF-7, COS7, SW480 and A549 lysates using STAT1 antibody.