

STARD5 RABBIT PAB

Cat.#: S220977

Product Name: Anti-STARD5 Rabbit Polyclonal Antibody

Synonyms:

UNIPROT ID: Q9NSY2 (Gene Accession - NP_871629)

Background: Cholesterol homeostasis is regulated, at least in part, by sterol regulatory element (SRE)-binding proteins (e.g., SREBP1; MIM 184756) and by liver X receptors (e.g., LXRA; MIM 602423). Upon sterol depletion, LXRs are inactive and SREBPs are cleaved, after which they bind promoter SREs and activate genes involved in cholesterol biosynthesis and uptake.

Immunogen: Synthetic peptide of human STARD5

Applications: ELISA, WB, IHC

Recommended Dilutions: IHC: 40-150;WB: 500-2000;ELISA: 2000-5000

Host Species: Rabbit

Clonality: Rabbit Polyclonal

Isotype: Immunogen-specific rabbit IgG

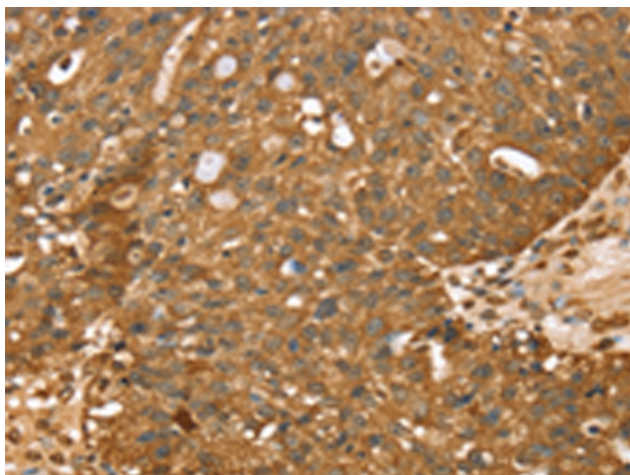
Purification: Antigen affinity purification

Species Reactivity: Human, Mouse

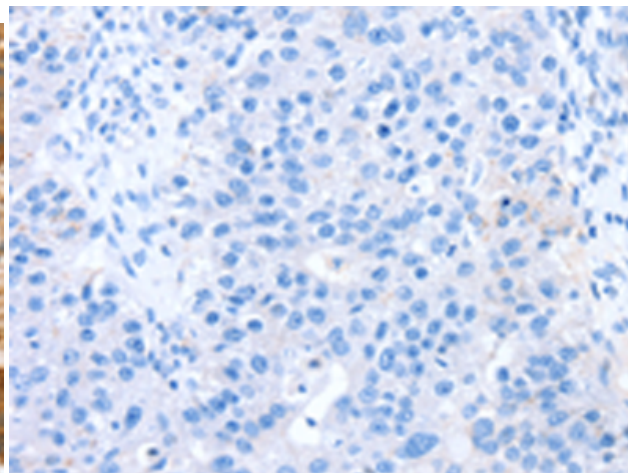
Constituents: PBS (without Mg²⁺ and Ca²⁺), pH 7.4, 150 mM NaCl, 0.05% Sodium Azide and 40% glycerol

Research Areas: Metabolism, Cancer, Cardiovascular

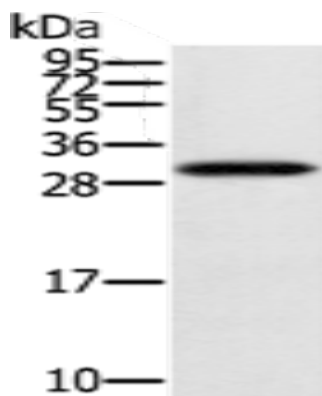
Storage & Shipping: Store at -20°C. Avoid repeated freezing and thawing



Immunohistochemistry analysis of paraffin embedded Human breast cancer tissue using 220977(STARD5 Antibody) at a dilution of 1/40(Cytoplasm).



In comparison with the IHC on the left, the same paraffin-embedded Human breast cancer tissue is first treated with the synthetic peptide and then with 220977(Anti-STARD5 Antibody) at dilution 1/40.



Gel: 12%SDS-PAGE, Lysate: 40 μ g;
Lane: Human fetal brain tissue;
Primary antibody: 220977(STARD5 Antibody)
at dilution 1/400;
Secondary antibody: Goat anti rabbit IgG at
1/8000 dilution;
Exposure time: 2 minutes