

ST6GAL1 RABBIT PAB

Cat.#: S218447

Product Name: Anti-ST6GAL1 Rabbit Polyclonal Antibody

Synonyms: ST6N; SIAT1; ST6GalI

UNIPROT ID: P15907 (Gene Accession - BC031476)

Background: This gene encodes a member of glycosyltransferase family 29. The encoded protein is a type II membrane protein that catalyzes the transfer of sialic acid from CMP-sialic acid to galactose-containing substrates. The protein, which is normally found in the Golgi but can be proteolytically processed to a soluble form, is involved in the generation of the cell-surface carbohydrate determinants and differentiation antigens HB-6, CD75, and CD76. This gene has been incorrectly referred to as CD75. Alternative splicing results in multiple transcript variants.

Immunogen: Fusion protein of human ST6GAL1

Applications: ELISA, IHC

Recommended Dilutions: IHC: 50-200; ELISA: 5000-10000

Host Species: Rabbit

Clonality: Rabbit Polyclonal

Isotype: Immunogen-specific rabbit IgG

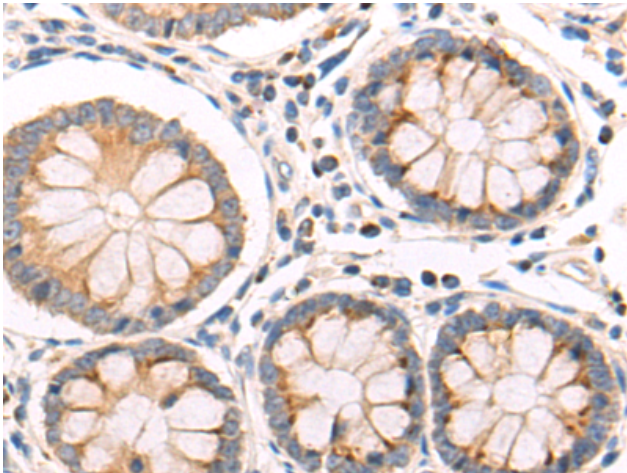
Purification: Antigen affinity purification

Species Reactivity: Human, Mouse, Rat

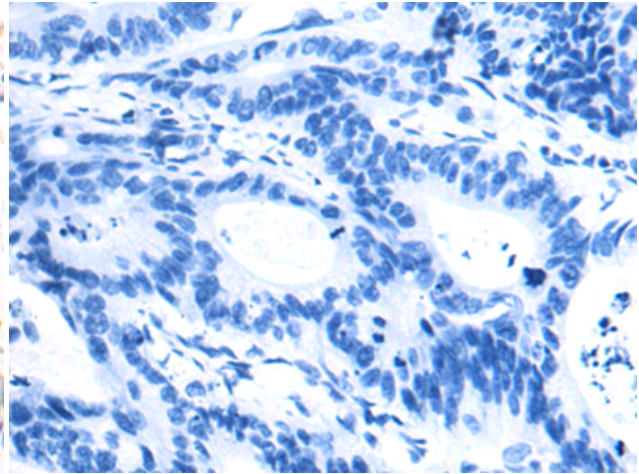
Constituents: PBS (without Mg²⁺ and Ca²⁺), pH 7.4, 150 mM NaCl, 0.05% Sodium Azide and 40% glycerol

Research Areas: Immunology

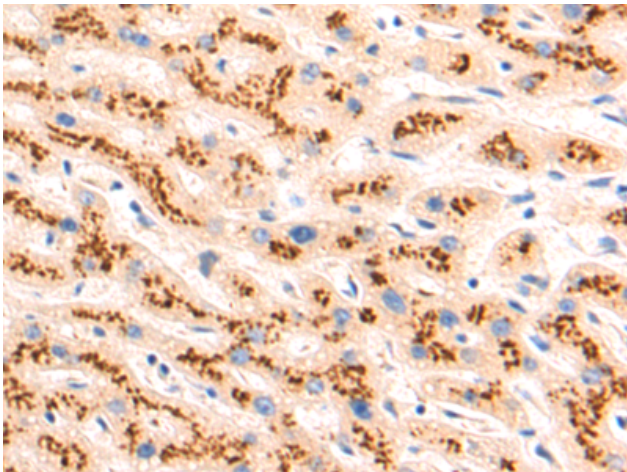
Storage & Shipping: Store at -20°C. Avoid repeated freezing and thawing



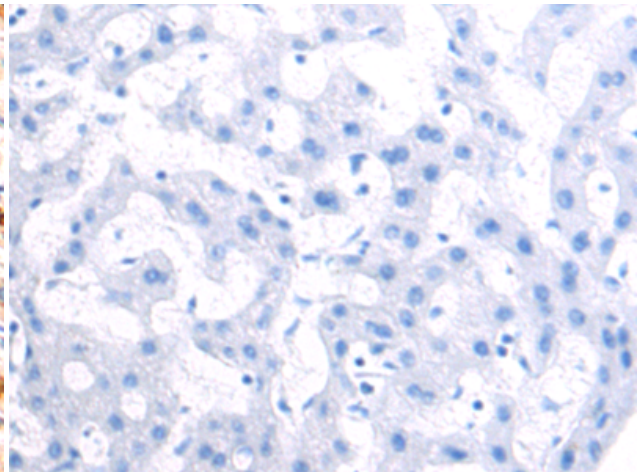
Immunohistochemistry analysis of paraffin embedded Human colorectal cancer tissue using 218447(ST6GAL1 Antibody) at a dilution of 1/55(Cytoplasm).



In comparison with the IHC on the left, the same paraffin-embedded Human colorectal cancer tissue is first treated with the fusion protein and then with 218447(Anti-ST6GAL1 Antibody) at dilution 1/55.



The image on the left is immunohistochemistry of paraffin-embedded Human liver cancer tissue using 218447(Anti-ST6GAL1 Antibody) at a dilution of 1/55.



In comparison with the IHC on the left, the same paraffin-embedded Human liver cancer tissue is first treated with fusion protein and then with D224472(Anti-ST6GAL1 Antibody) at dilution 1/55.