

SSTR4 RABBIT PAB

Cat.#: S220213

Product Name: Anti-SSTR4 Rabbit Polyclonal Antibody

Synonyms: SS4R; SS4-R; SS-4-R

UNIPROT ID: P31391 (Gene Accession - NP_001043)

Background: Somatostatin acts at many sites to inhibit the release of many hormones and other secretory proteins. The biologic effects of somatostatin are probably mediated by a family of G protein-coupled receptors that are expressed in a tissue-specific manner. SSTR4 is a member of the superfamily of receptors having seven transmembrane segments and is expressed in highest levels in fetal and adult brain and lung.

Immunogen: Synthetic peptide of human SSTR4

Applications: ELISA, IHC

Recommended Dilutions: IHC: 15-50; ELISA: 1000-5000

Host Species: Rabbit

Clonality: Rabbit Polyclonal

Isotype: Immunogen-specific rabbit IgG

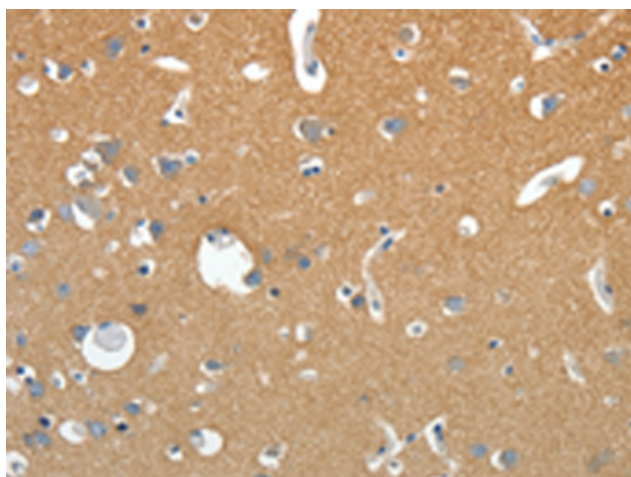
Purification: Antigen affinity purification

Species Reactivity: Human, Mouse, Rat

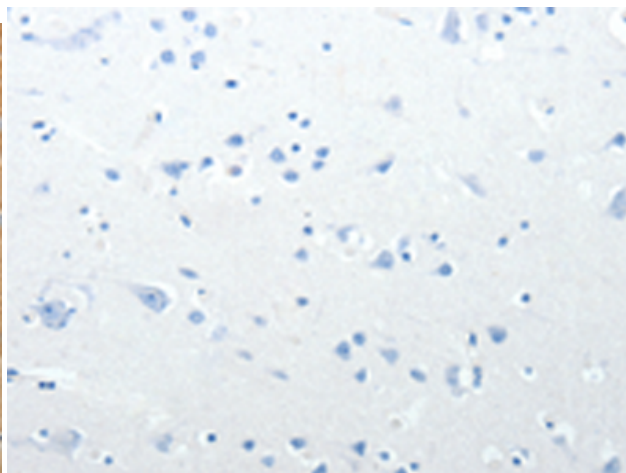
Constituents: PBS (without Mg²⁺ and Ca²⁺), pH 7.4, 150 mM NaCl, 0.05% Sodium Azide and 40% glycerol

Research Areas: Signal Transduction, Neuroscience

Storage & Shipping: Store at -20°C. Avoid repeated freezing and thawing



Immunohistochemistry analysis of paraffin embedded Human brain tissue using 220213(SSTR4 Antibody) at a dilution of 1/20(Cytoplasm, Cell membrane).



In comparison with the IHC on the left, the same paraffin-embedded Human brain tissue is first treated with the synthetic peptide and then with 220213(Anti-SSTR4 Antibody) at dilution 1/20.