

## SSBP4 RABBIT PAB

**Cat.#:** S217853

**Product Name:** Anti-SSBP4 Rabbit Polyclonal Antibody

**Synonyms:**

**UNIPROT ID:** Q9BWG4 (Gene Accession - BC000274 )

**Background:** SSBP4 (single stranded DNA binding protein 4) is a 385 amino acid nuclear protein that contains one LisH domain and multiple phosphorylated amino acid residues. The gene encoding SSBP4 maps to human chromosome 19, which consists of over 63 million bases, houses approximately 1,400 genes and is recognized for having the greatest gene density of the human chromosomes. It is the genetic home for a number of immunoglobulin (Ig) superfamily members, including the killer cell and leukocyte Ig-like receptors, a number of ICAMs, the CEACAM and PSG family and Fc receptors (FcRs).

**Immunogen:** Fusion protein of human SSBP4

**Applications:** ELISA, IHC

**Recommended Dilutions:** IHC: 25-100; ELISA: 2000-5000

**Host Species:** Rabbit

**Clonality:** Rabbit Polyclonal

**Isotype:** Immunogen-specific rabbit IgG

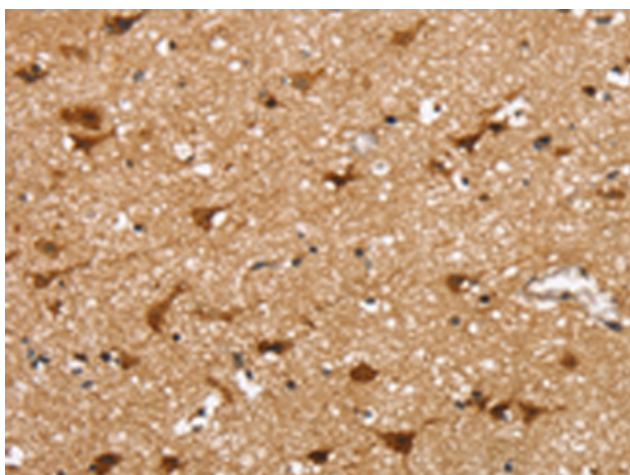
**Purification:** Antigen affinity purification

**Species Reactivity:** Human

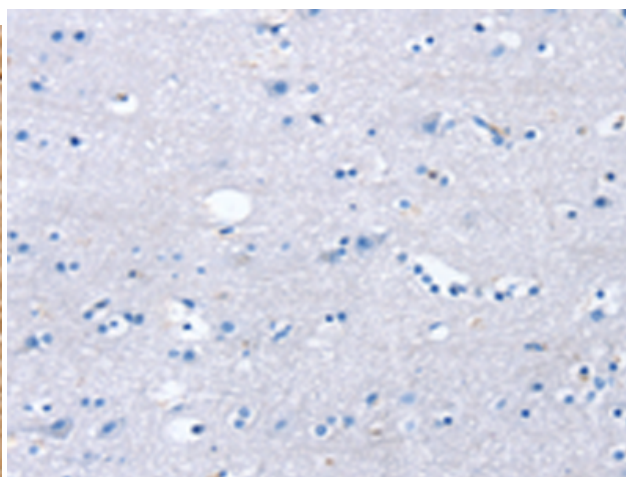
**Constituents:** PBS (without Mg<sup>2+</sup> and Ca<sup>2+</sup>), pH 7.4, 150 mM NaCl, 0.05% Sodium Azide and 40% glycerol

**Research Areas:** Epigenetics and Nuclear Signaling

**Storage & Shipping:** Store at -20°C. Avoid repeated freezing and thawing



Immunohistochemistry analysis of paraffin embedded Human brain tissue using 217853(SSBP4 Antibody) at a dilution of 1/25(Nucleus).



In comparison with the IHC on the left, the same paraffin-embedded Human brain tissue is first treated with the fusion protein and then with 217853(Anti-SSBP4 Antibody) at dilution 1/25.