

## SSB RABBIT PAB

**Cat.#:** S220210

**Product Name:** Anti-SSB Rabbit Polyclonal Antibody

**Synonyms:** La; LARP3; La/SSB

**UNIPROT ID:** P05455 (Gene Accession - NP\_003133.1)

**Background:** The protein encoded by this gene is involved in diverse aspects of RNA metabolism, including binding and protecting poly(U) termini of nascent RNA polymerase III transcripts from exonuclease digestion, processing 5' and 3' ends of pre-tRNA precursors, acting as an RNA chaperone, and binding viral RNAs associated with hepatitis C virus. Autoantibodies reacting with this protein are found in the sera of patients with Sjogren syndrome and systemic lupus erythematosus. Alternative promoter usage results in two different transcript variants which encode the same protein.

**Immunogen:** Synthetic peptide of human SSB

**Applications:** ELISA, IHC

**Recommended Dilutions:** IHC: 50-200; ELISA: 2000-5000

**Host Species:** Rabbit

**Clonality:** Rabbit Polyclonal

**Isotype:** Immunogen-specific rabbit IgG

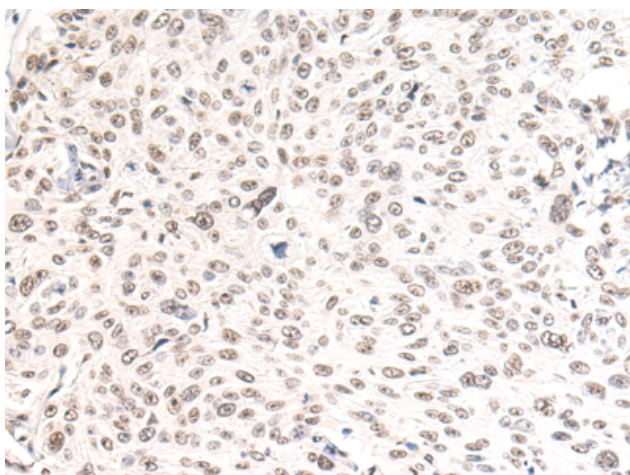
**Purification:** Antigen affinity purification

**Species Reactivity:** Human, Mouse, Rat

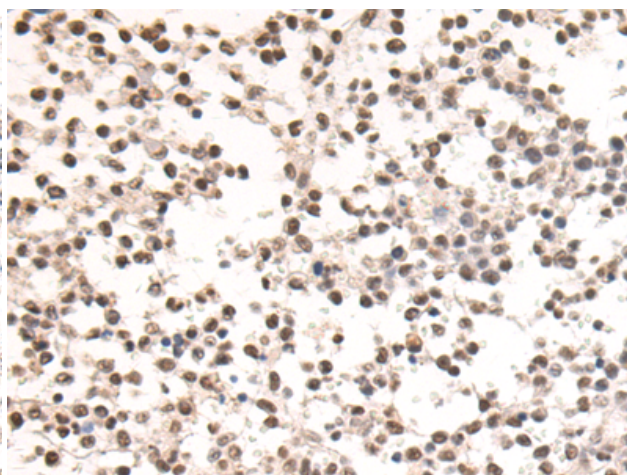
**Constituents:** PBS (without Mg<sup>2+</sup> and Ca<sup>2+</sup>), pH 7.4, 150 mM NaCl, 0.05% Sodium Azide and 40% glycerol

**Research Areas:** Epigenetics and Nuclear Signaling, Immunology

**Storage & Shipping:** Store at -20°C. Avoid repeated freezing and thawing



Immunohistochemistry analysis of paraffin-embedded Human cervical cancer tissue using 220210(SSB Antibody) at a dilution of 1/50(Nucleus).



Immunohistochemistry analysis of paraffin-embedded Human breast cancer tissue using 220210(Anti-SSB Antibody) at a dilution of 1/50.