

SRP72 RABBIT MAB

Cat.#: N262935

Product Name: Anti-SRP72 Rabbit Monoclonal Antibody

Synonyms: BMFF; BMFSI; HELI03

UNIPROT ID: O76094

Background: Signal-recognition-particle assembly has a crucial role in targeting secretory proteins to the rough endoplasmic reticulum membrane. Binds the 7S RNA only in presence of SRP68. This ribonucleoprotein complex might interact directly with the docking protein in the ER membrane and possibly participate in the elongation arrest function.

Immunogen: A synthetic peptide of human SRP72

Applications: WB,IHC-F,IHC-P,ICC/IF

Recommended Dilutions: WB: 1/500-1/1000 IHC: 1/50-1/100 IF: 1/50-1/200

Host Species: Rabbit

Clonality: Rabbit Monoclonal

Clone ID: R08-6I4

MW: Calculated MW: 75 kDa; Observed MW: 75 kDa

Isotype: IgG

Purification: Affinity Purified

Species Reactivity: Human

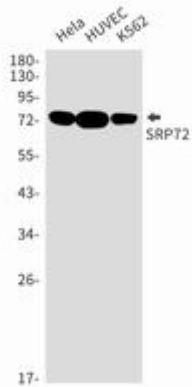
Conjugation: Unconjugated

Modification: Unmodified

Constituents: PBS (without Mg²⁺ and Ca²⁺), pH 7.3 containing 50% glycerol, 0.5% BSA and 0.02% sodium azide

Research Areas: Epigenetics and Nuclear Signaling

Storage & Shipping: Store at -20°C. Avoid repeated freezing and thawing



Western blot analysis of SRP72 in HeLa, HUVEC, K562 lysates using SRP72 antibody.