

## SRGAP3 RABBIT PAB

**Cat.#:** S217851

**Product Name:** Anti-SRGAP3 Rabbit Polyclonal Antibody

**Synonyms:** WRP; MEGAP; SRGAP2; ARHGAP14

**UNIPROT ID:** O43295 (Gene Accession - BC039300 )

**Background:** SRGAP3 is a 1099 amino acid protein containing 1 FCH domain, 1 Rho-GAP domain and 1 SH3 domain. Expressed highly in brain, and in lower levels in kidney, WRP is thought to play a role in cell migration through its interaction with Cdc42 and Rac1. Cdc42 and Rac1 are two intracellular signaling proteins that regulate the multistep cell migration process. WRP downregulates Cdc42 and Rac1 activity, thereby impairing actin and microtubule dynamics, the formation of protrusions, and total cell migration. Defects in the gene encoding WRP have been linked to severe idiopathic mental retardation. Three isoforms of WRP exist as a result of alternative splicing events.

**Immunogen:** Fusion protein of human SRGAP3

**Applications:** ELISA, IHC

**Recommended Dilutions:** IHC: 25-100; ELISA: 2000-5000

**Host Species:** Rabbit

**Clonality:** Rabbit Polyclonal

**Isotype:** Immunogen-specific rabbit IgG

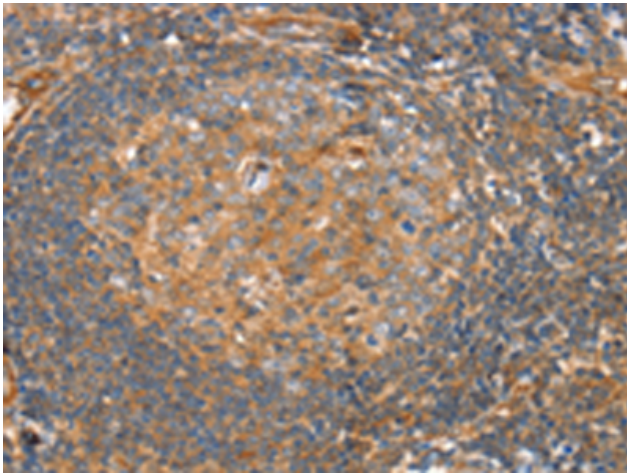
**Purification:** Antigen affinity purification

**Species Reactivity:** Human, Mouse

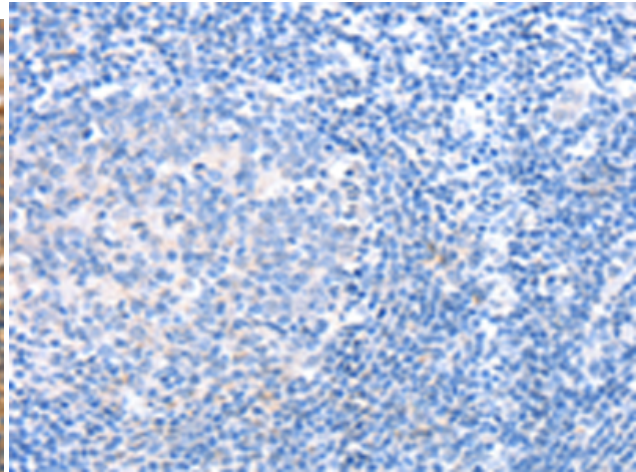
**Constituents:** PBS (without Mg<sup>2+</sup> and Ca<sup>2+</sup>), pH 7.4, 150 mM NaCl, 0.05% Sodium Azide and 40% glycerol

**Research Areas:** Signal Transduction, Neuroscience

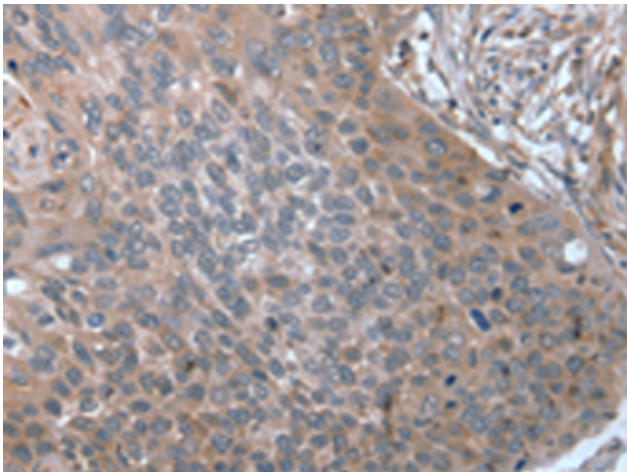
**Storage & Shipping:** Store at -20°C. Avoid repeated freezing and thawing



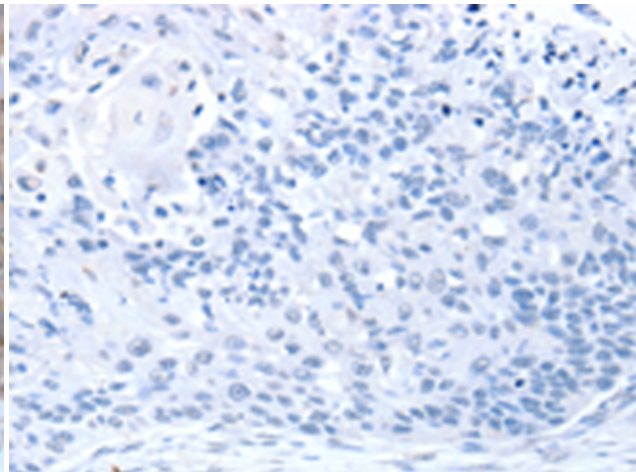
Immunohistochemistry analysis of paraffin embedded Human tonsil tissue using 217851(SRGAP3 Antibody) at a dilution of 1/30(Cytoplasm).



In comparison with the IHC on the left, the same paraffin-embedded Human tonsil tissue is first treated with the fusion protein and then with 217851(Anti-SRGAP3 Antibody) at dilution 1/30.



The image on the left is immunohistochemistry of paraffin-embedded Human esophagus cancer tissue using 217851(Anti-SRGAP3 Antibody) at a dilution of 1/30.



In comparison with the IHC on the left, the same paraffin-embedded Human esophagus cancer tissue is first treated with fusion protein and then with D223225(Anti-SRGAP3 Antibody) at dilution 1/30.