

SRC RABBIT PAB

Cat.#: S216805

Product Name: Anti-SRC Rabbit Polyclonal Antibody

Synonyms: ASV; SRC1; c-SRC; p60-Src

UNIPROT ID: P12931 (Gene Accession - BC011566)

Background: This gene is highly similar to the v-src gene of Rous sarcoma virus. This proto-oncogene may play a role in the regulation of embryonic development and cell growth. The protein encoded by this gene is a tyrosine-protein kinase whose activity can be inhibited by phosphorylation by c-SRC kinase. Mutations in this gene could be involved in the malignant progression of colon cancer. Two transcript variants encoding the same protein have been found for this gene.

Immunogen: Fusion protein of human SRC

Applications: ELISA, WB, IHC

Recommended Dilutions: IHC: 25-100;WB: 200-1000;ELISA: 1000-2000

Host Species: Rabbit

Clonality: Rabbit Polyclonal

Isotype: Immunogen-specific rabbit IgG

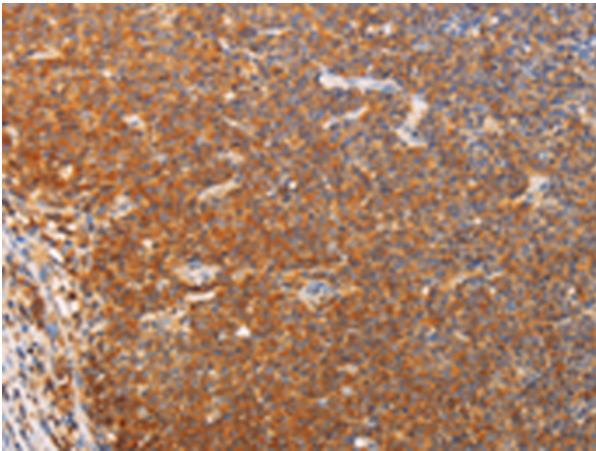
Purification: Antigen affinity purification

Species Reactivity: Human, Mouse, Rat

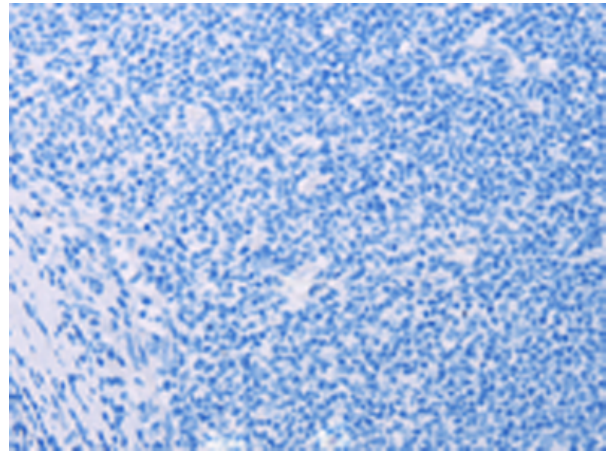
Constituents: PBS (without Mg²⁺ and Ca²⁺), pH 7.4, 150 mM NaCl, 0.05% Sodium Azide and 40% glycerol

Research Areas: Signal Transduction, Epigenetics and Nuclear Signaling

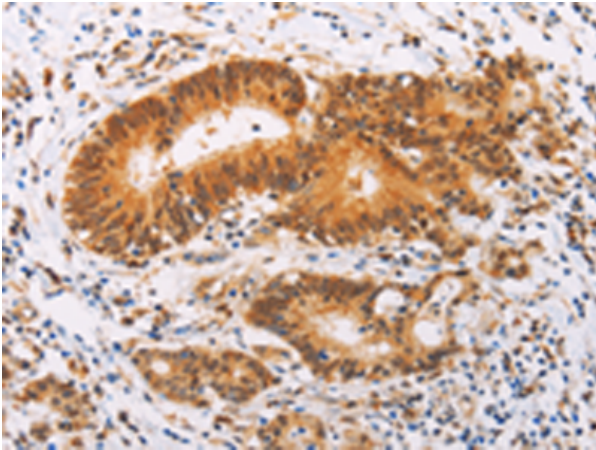
Storage & Shipping: Store at -20°C. Avoid repeated freezing and thawing



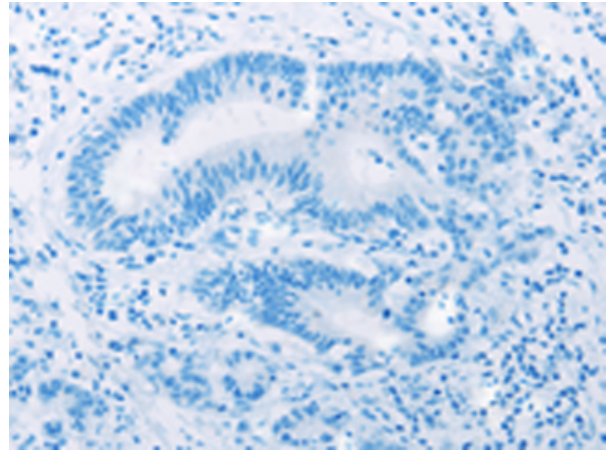
Immunohistochemistry analysis of paraffin embedded Human lymphoma tissue using 216805(SRC Antibody) at a dilution of 1/20(Cytoplasm).



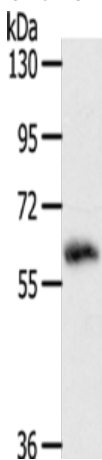
In comparison with the IHC on the left, the same paraffin-embedded Human lymphoma tissue is first treated with the fusion protein and then with 216805(Anti-SRC Antibody) at dilution 1/20.



The image on the left is immunohistochemistry of paraffin-embedded Human colon cancer tissue using 216805(Anti-SRC Antibody) at a dilution of 1/20.



In comparison with the IHC on the left, the same paraffin-embedded Human colon cancer tissue is first treated with fusion protein and then with D221267(Anti-SRC Antibody) at dilution 1/20.



Gel: 10%SDS-PAGE, Lysate: 40 µg;
Lane: PC3 cells;
Primary antibody: 216805(SRC Antibody) at dilution 1/200;
Secondary antibody: Goat anti rabbit IgG at 1/8000 dilution;
Exposure time: 2 minutes



Product Description

Pioneering GTPase and Oncogene Product Development since 2010
