

## SQSTM1/P62 RABBIT PAB

**Cat.#:** N226064

**Product Name:** Anti-SQSTM1/p62 Rabbit pAb

**Synonyms:** p60; p62; A170; DMRV; OSIL; PDB3; ZIP3; p62B; NADGP; FTDALS3

**UNIPROT ID:** Q13501

**Background:** Autophagy receptor that interacts directly with both the cargo to become degraded and an autophagy modifier of the MAP1 LC3 family. Required both for the formation and autophagic degradation of polyubiquitin-containing bodies, called ALIS (aggresome-like induced structures) and links ALIS to the autophagic machinery. Involved in midbody ring degradation. May regulate the activation of NFKB1 by TNF-alpha, nerve growth factor (NGF) and interleukin-1.

**Immunogen:** A synthetic peptide of human SQSTM1/p62

**Applications:** WB, ICC/IF, FC

**Recommended Dilutions:** WB: 1/500-1/1000 IF: 1/50-1/200 FC: 1/50-1/100

**Host Species:** Rabbit

**Clonality:** Rabbit Polyclonal

**Clone ID:** -

**MW:** Calculated MW: 48 kDa; Observed MW: 62 kDa

**Isotype:** IgG

**Purification:** Affinity Purified

**Species Reactivity:** Human, Mouse

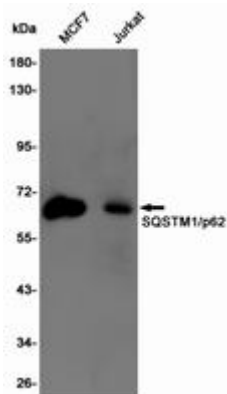
**Conjugation:** Unconjugated

**Modification:** Unmodified

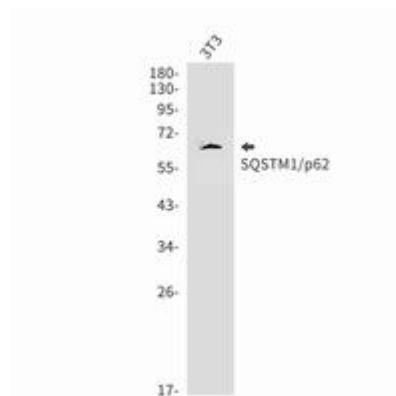
**Constituents:** PBS (without Mg<sup>2+</sup> and Ca<sup>2+</sup>), pH 7.3 containing 50% glycerol, 0.5% BSA and 0.02% sodium azide

**Research Areas:** Signal Transduction

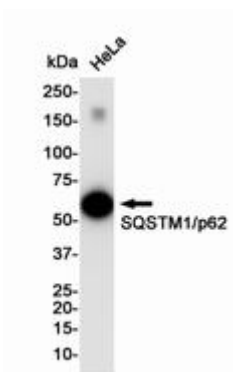
**Storage & Shipping:** Store at -20°C. Avoid repeated freezing and thawing



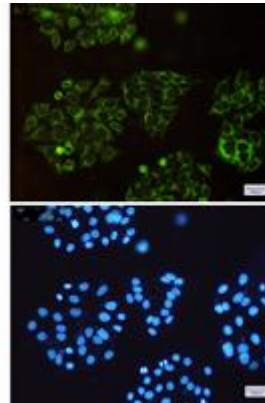
Western blot analysis of SQSTM1/p62 in MCF-7, Jurkat lysates using SQSTM1/p62 antibody



Western blot analysis of SQSTM1/p62 in 3T3 lysates using SQSTM1/p62 antibody.



Western blot analysis of SQSTM1/p62 in HeLa lysates using SQSTM1/p62 antibody.



Immunocytochemistry analysis of SQSTM1/p62 (green) in HeLa using SQSTM1/p62 antibody, and DAPI (blue).