

SQSTM1/P62 RABBIT MAB

Cat.#: N263559

Product Name: Anti-SQSTM1/p62 Rabbit Monoclonal Antibody

Synonyms: p60; p62; A170; DMRV; OSIL; PDB3; ZIP3; p62B; NADGP; FTDALS3

UNIPROT ID: Q13501

Background: Autophagy receptor that interacts directly with both the cargo to become degraded and an autophagy modifier of the MAP1 LC3 family. Required both for the formation and autophagic degradation of polyubiquitin-containing bodies, called ALIS (aggresome-like induced structures) and links ALIS to the autophagic machinery. Involved in midbody ring degradation. May regulate the activation of NFKB1 by TNF-alpha, nerve growth factor (NGF) and interleukin-1.

Immunogen: Recombinant protein of human SQSTM1/p62

Applications: WB, ICC/IF, IP

Recommended Dilutions: WB: 1/500-1/1000 IF: 1/50-1/200 IP: 1/20

Host Species: Rabbit

Clonality: Rabbit Monoclonal

Clone ID: R08-4H8

MW: Calculated MW: 48 kDa; Observed MW: 62 kDa

Isotype: IgG

Purification: Affinity Purified

Species Reactivity: Human

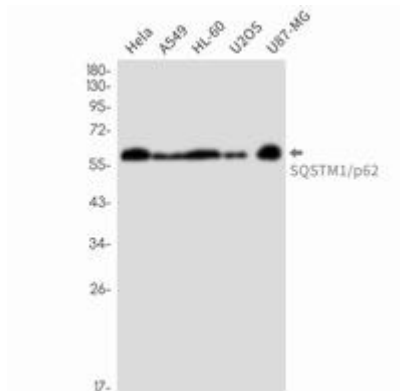
Conjugation: Unconjugated

Modification: Unmodified

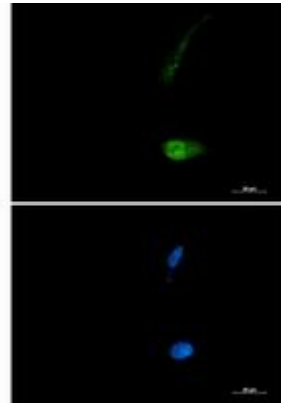
Constituents: PBS (without Mg²⁺ and Ca²⁺), pH 7.3 containing 50% glycerol, 0.5% BSA and 0.02% sodium azide

Research Areas: Autophagy Autophagosome

Storage & Shipping: Store at -20°C. Avoid repeated freezing and thawing



Western blot analysis of SQSTM1/p62 in A549, HL-60, U2OS lysates using SQSTM1/p62 antibody.



Immunocytochemistry analysis of SQSTM1/p62 (green) in U87-MG using SQSTM1/p62 antibody, and DAPI (blue).