

## SPTAN1 RABBIT PAB

**Cat.#:** S220968

**Product Name:** Anti-SPTAN1 Rabbit Polyclonal Antibody

**Synonyms:** NEAS; EIEE5; SPTA2

**UNIPROT ID:** Q13813 (Gene Accession - NP\_003118 )

**Background:** Spectrins are a family of filamentous cytoskeletal proteins that function as essential scaffold proteins that stabilize the plasma membrane and organize intracellular organelles. Spectrins are composed of alpha and beta dimers that associate to form tetramers linked in a head-to-head arrangement. This gene encodes an alpha spectrin that is specifically expressed in nonerythrocytic cells. The encoded protein has been implicated in other cellular functions including DNA repair and cell cycle regulation.

**Immunogen:** Synthetic peptide of human SPTAN1

**Applications:** ELISA, IHC

**Recommended Dilutions:** IHC: 30-150; ELISA: 2000-5000

**Host Species:** Rabbit

**Clonality:** Rabbit Polyclonal

**Isotype:** Immunogen-specific rabbit IgG

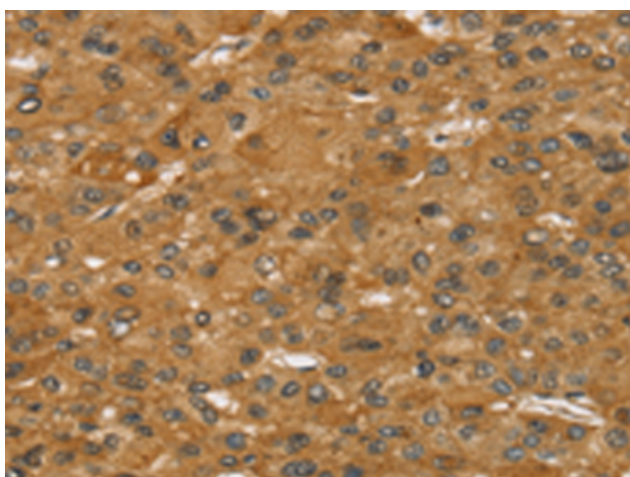
**Purification:** Antigen affinity purification

**Species Reactivity:** Human, Mouse, Rat

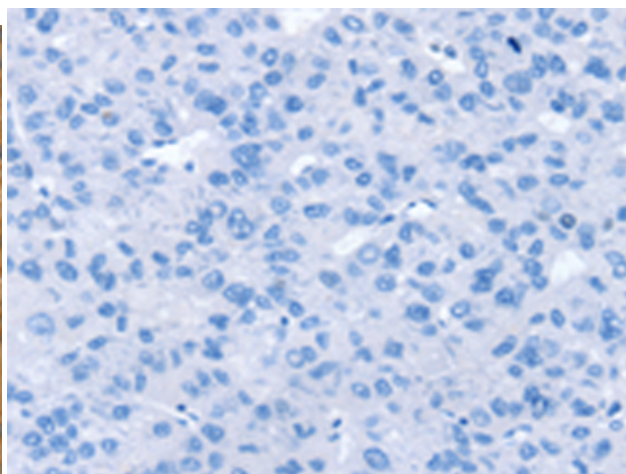
**Constituents:** PBS (without Mg<sup>2+</sup> and Ca<sup>2+</sup>), pH 7.4, 150 mM NaCl, 0.05% Sodium Azide and 40% glycerol

**Research Areas:** Signal Transduction, Neuroscience

**Storage & Shipping:** Store at -20°C. Avoid repeated freezing and thawing



Immunohistochemistry analysis of paraffin embedded Human liver cancer tissue using 220968(SPTAN1 Antibody) at a dilution of 1/30(Cell membrane and Cytoplasm ).



In comparison with the IHC on the left, the same paraffin-embedded Human liver cancer tissue is first treated with the synthetic peptide and then with 220968(Anti-SPTAN1 Antibody) at dilution 1/30.