

## SPRY3 RABBIT PAB

**Cat.#:** S217850

**Product Name:** Anti-SPRY3 Rabbit Polyclonal Antibody

**Synonyms:** spry-3

**UNIPROT ID:** O43610 (Gene Accession - BC069609 )

**Background:** Inhibits neurite branching, arbor length and neurite complexity (By similarity). Inhibits EGF-mediated p42/44 ERK signaling (By similarity). Negatively regulates the MAPK cascade, resulting in a reduction of extracellular matrix protein accumulation (PubMed:30878395). May function as an antagonist of fibroblast growth factor (FGF) pathways and may negatively modulate respiratory organogenesis (PubMed:9458049).

**Immunogen:** Fusion protein of human SPRY3

**Applications:** ELISA, WB, IHC

**Recommended Dilutions:** IHC: 50-200;WB: 500-2000;ELISA: 5000-10000

**Host Species:** Rabbit

**Clonality:** Rabbit Polyclonal

**Isotype:** Immunogen-specific rabbit IgG

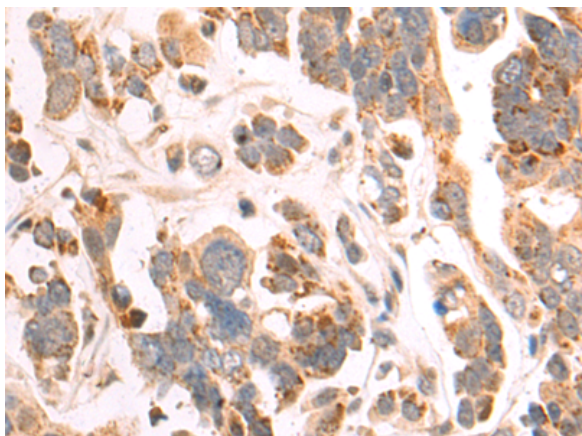
**Purification:** Antigen affinity purification

**Species Reactivity:** Human, Mouse

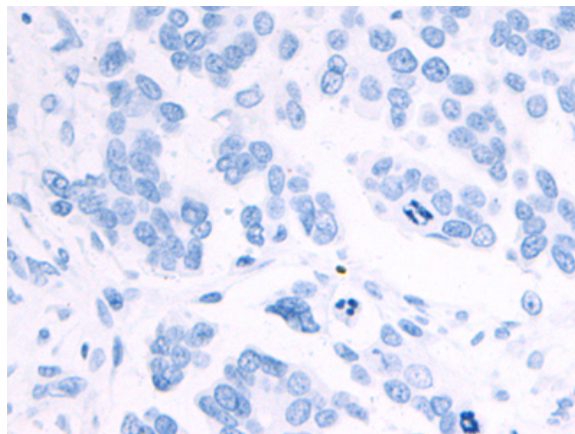
**Constituents:** PBS (without Mg<sup>2+</sup> and Ca<sup>2+</sup>), pH 7.4, 150 mM NaCl, 0.05% Sodium Azide and 40% glycerol

**Research Areas:** Signal Transduction

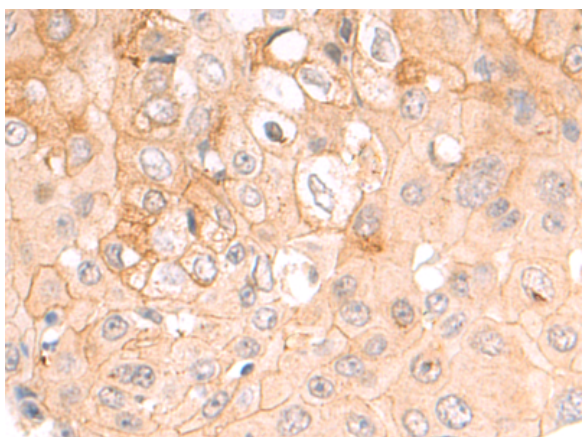
**Storage & Shipping:** Store at -20°C. Avoid repeated freezing and thawing



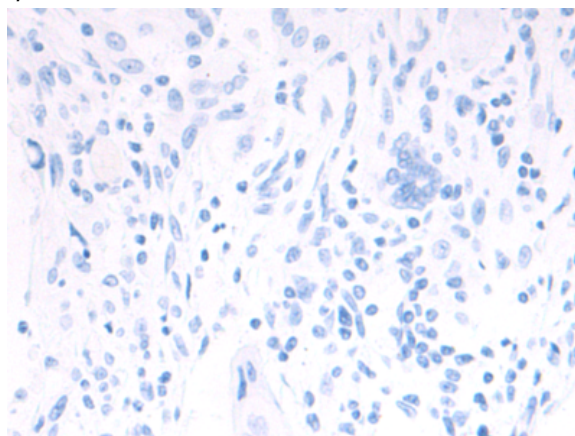
Immunohistochemistry analysis of paraffin embedded Human colorectal cancer tissue using 217850 (SPRY3 Antibody) at a dilution of 1/50 (Cytoplasm).



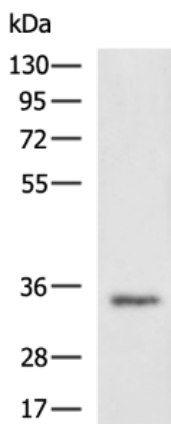
In comparison with the IHC on the left, the same paraffin-embedded Human colorectal cancer tissue is first treated with the fusion protein and then with 217850 (Anti-SPRY3 Antibody) at dilution 1/50.



The image on the left is immunohistochemistry of paraffin-embedded Human esophagus cancer tissue using 217850 (Anti-SPRY3 Antibody) at a dilution of 1/50.



In comparison with the IHC on the left, the same paraffin-embedded Human esophagus cancer tissue is first treated with fusion protein and then with D223220 (Anti-SPRY3 Antibody) at dilution 1/50.



Gel: 8%SDS-PAGE, Lysate: 40 µg;  
Lane: Mouse brain tissue lysate;  
Primary antibody: 217850 (SPRY3 Antibody) at dilution 1/400;  
Secondary antibody: HRP-conjugated Goat anti rabbit IgG at 1/5000 dilution;  
Exposure time: 2 minutes



# Product Description

Pioneering GTPase and Oncogene Product Development since 2010

---