

## SPROUTY 4 RABBIT MAB

**Cat.#:** N262932

**Product Name:** Anti-Sprouty 4 Rabbit Monoclonal Antibody

**Synonyms:** Sprouty homolog 4; SPRY 4; Spry-4

**UNIPROT ID:** Q9C004

**Background:** Suppresses the insulin receptor and EGFR-transduced MAPK signaling pathway, but does not inhibit MAPK activation by a constitutively active mutant Ras. Probably impairs the formation of GTP-Ras.

**Immunogen:** A synthetic peptide of human Sprouty 4

**Applications:** WB,IHC-F,IHC-P,ICC/IF,IP

**Recommended Dilutions:** WB: 1/500-1/1000 IHC: 1/50-1/100 IF: 1/50-1/200 IP: 1/20

**Host Species:** Rabbit

**Clonality:** Rabbit Monoclonal

**Clone ID:** R01-6K5

**MW:** Calculated MW: 33 kDa; Observed MW: 33 kDa

**Isotype:** IgG

**Purification:** Affinity Purified

**Species Reactivity:** Human,Mouse,Rat

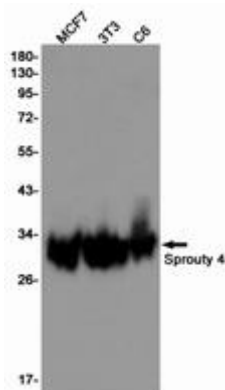
**Conjugation:** Unconjugated

**Modification:** Unmodified

**Constituents:** PBS (without Mg<sup>2+</sup> and Ca<sup>2+</sup>), pH 7.3 containing 50% glycerol, 0.5% BSA and 0.02% sodium azide

**Research Areas:** Signal Transduction

**Storage & Shipping:** Store at -20°C. Avoid repeated freezing and thawing



Western blot analysis of Sprouty 4 in MCF-7, 3T3, C6 lysates using Sprouty 4 antibody.



# Product Description

Pioneering GTPase and Oncogene Product Development since 2010

---