

## SPON1 RABBIT PAB

**Cat.#:** S220969

**Product Name:** Anti-SPON1 Rabbit Polyclonal Antibody

**Synonyms:** f-spondin; VSGP/F-spondin

**UNIPROT ID:** Q9HCB6 (Gene Accession - NP\_006099 )

**Background:** F-Spondin, also designated Spondin-1 or vascular smooth muscle growth-promoting factor, is a member of the subgroup of the Thrombospondin type 1 class molecules. F-Spondin is a secreted, extracellular matrix-attached protein which patterns axonal trajectories by promoting adhesion and outgrowth of commissural axons, in addition to inhibiting outgrowth of motor axons.

**Immunogen:** Synthetic peptide of human SPON1

**Applications:** ELISA, WB, IHC

**Recommended Dilutions:** IHC: 25-100;WB: 200-1000;ELISA: 1000-2000

**Host Species:** Rabbit

**Clonality:** Rabbit Polyclonal

**Isotype:** Immunogen-specific rabbit IgG

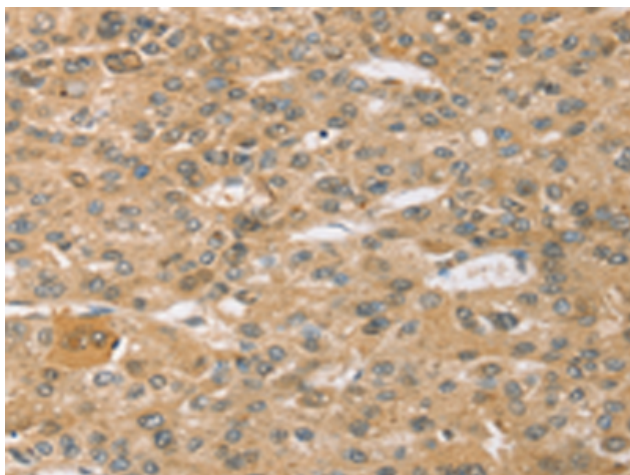
**Purification:** Antigen affinity purification

**Species Reactivity:** Human, Mouse, Rat

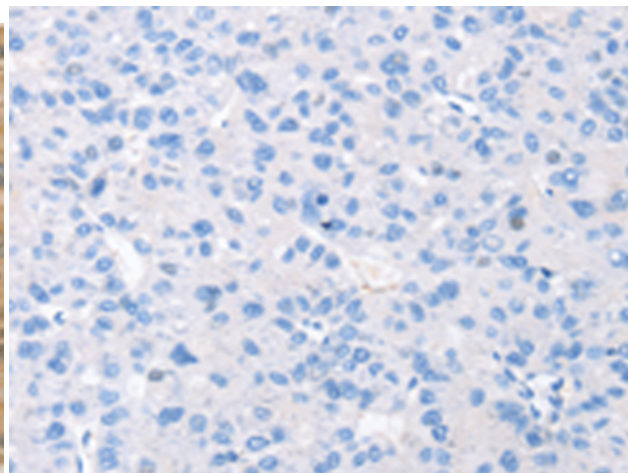
**Constituents:** PBS (without Mg<sup>2+</sup> and Ca<sup>2+</sup>), pH 7.4, 150 mM NaCl, 0.05% Sodium Azide and 40% glycerol

**Research Areas:** Neuroscience, Cardiovascular

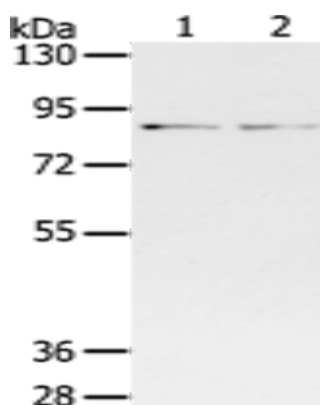
**Storage & Shipping:** Store at -20°C. Avoid repeated freezing and thawing



Immunohistochemistry analysis of paraffin embedded Human liver cancer tissue using 220969(SPONI Antibody) at a dilution of 1/30(Cytoplasm).



In comparison with the IHC on the left, the same paraffin-embedded Human liver cancer tissue is first treated with the synthetic peptide and then with 220969(Anti-SPONI Antibody) at dilution 1/30.



Gel: 6%SDS-PAGE, Lysate: 40  $\mu$ g;

Lane 1-2: Mouse brain tissue, Mouse lung tissue;

Primary antibody: 220969(SPONI Antibody) at dilution 1/400;

Secondary antibody: Goat anti rabbit IgG at 1/8000 dilution;

Exposure time: 2 minutes