

SPINK7 RABBIT PAB

Cat.#: S221228

Product Name: Anti-SPINK7 Rabbit Polyclonal Antibody

Synonyms: ECG2; ECRG2

UNIPROT ID: P58062 (Gene Accession - NP_115955)

Background: SPINK7 (serine peptidase inhibitor, Kazal type 7), also known as Ecg2 (esophagus cancer-related gene 2 protein), is a 76 amino acid secreted protein. Containing one Kazal-like domain, SPINK7 is thought to be a serine protease inhibitor. The gene that encodes SPINK7 maps to human chromosome 5, which contains 181 million base pairs encoding around 1,000 genes. Chromosome 5 is associated with Cockayne syndrome through the ERCC8 gene and familial adenomatous polyposis through the adenomatous polyposis coli (APC) tumor suppressor gene. Treacher Collins syndrome is also chromosome 5 associated and is caused by insertions or deletions within the TCOF1 gene. Deletion of the p arm of chromosome 5 leads to Cri du chat syndrome. Deletion of 5q or chromosome 5 altogether is common in therapy-related acute myelogenous leukemias and myelodysplastic syndrome. Probable serine protease inhibitor.

Immunogen: Synthetic peptide of human SPINK7

Applications: ELISA, IHC

Recommended Dilutions: IHC: 25-100; ELISA: 2000-5000

Host Species: Rabbit

Clonality: Rabbit Polyclonal

Isotype: Immunogen-specific rabbit IgG

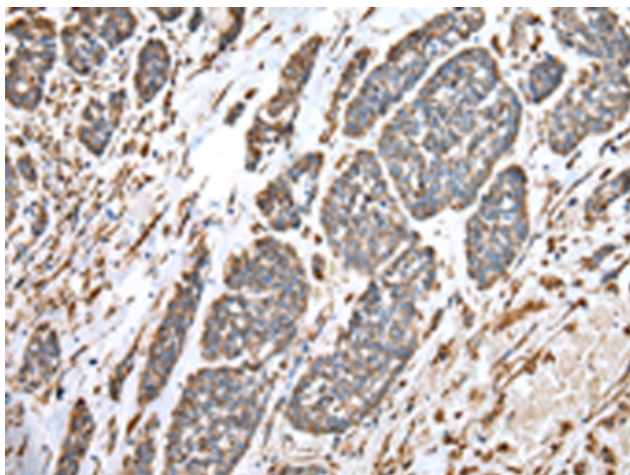
Purification: Antigen affinity purification

Species Reactivity: Human

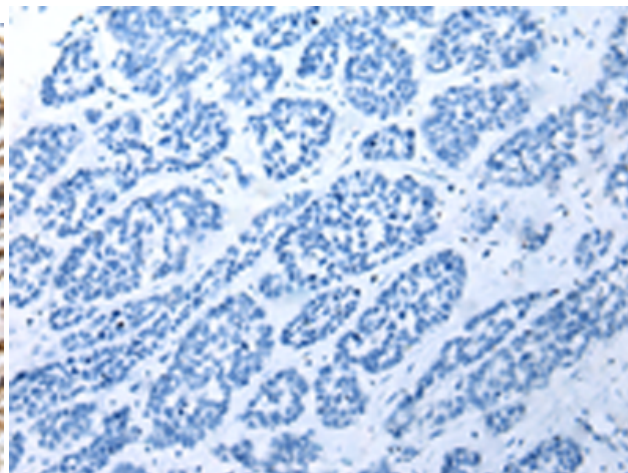
Constituents: PBS (without Mg²⁺ and Ca²⁺), pH 7.4, 150 mM NaCl, 0.05% Sodium Azide and 40% glycerol

Research Areas: Signal Transduction, Cell Biology

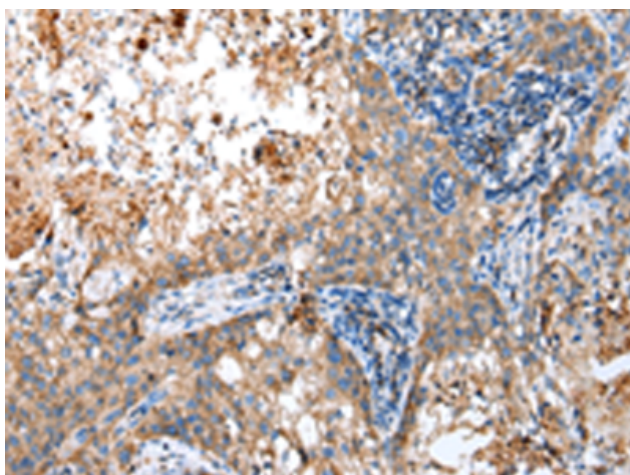
Storage & Shipping: Store at -20°C. Avoid repeated freezing and thawing



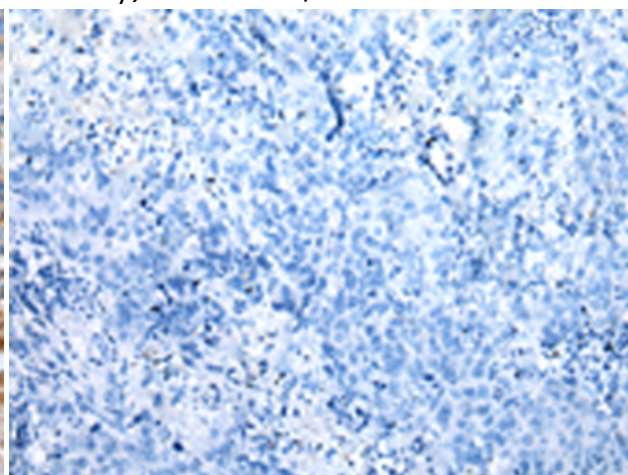
Immunohistochemistry analysis of paraffin embedded Human esophagus cancer tissue using 221228(SPINK7 Antibody) at a dilution of 1/30(Cytoplasm).



In comparison with the IHC on the left, the same paraffin-embedded Human esophagus cancer tissue is first treated with the synthetic peptide and then with 221228(Anti-SPINK7 Antibody) at dilution 1/30.



The image on the left is immunohistochemistry of paraffin-embedded Human lung cancer tissue using 221228(Anti-SPINK7 Antibody) at a dilution of 1/30.



In comparison with the IHC on the left, the same paraffin-embedded Human lung cancer tissue is first treated with synthetic peptide and then with D262736(Anti-SPINK7 Antibody) at dilution 1/30.