

SPIN2B RABBIT PAB

Cat.#: S216803

Product Name: Anti-SPIN2B Rabbit Polyclonal Antibody

Synonyms: SPIN-2; TDRD26; SPIN-2B; dJ323P24.2; SPIN2_duplicate

UNIPROT ID: Q9BPZ2 (Gene Accession - BC000044)

Background: Involved in the regulation of cell cycle progression, this activity is related to the inhibition of apoptosis following the removal of essential growth factors. Exhibits H3K4me3-binding activity.

Immunogen: Fusion protein of human SPIN2B

Applications: ELISA, WB, IHC

Recommended Dilutions: IHC: 50-200;WB: 500-2000;ELISA: 5000-10000

Host Species: Rabbit

Clonality: Rabbit Polyclonal

Isotype: Immunogen-specific rabbit IgG

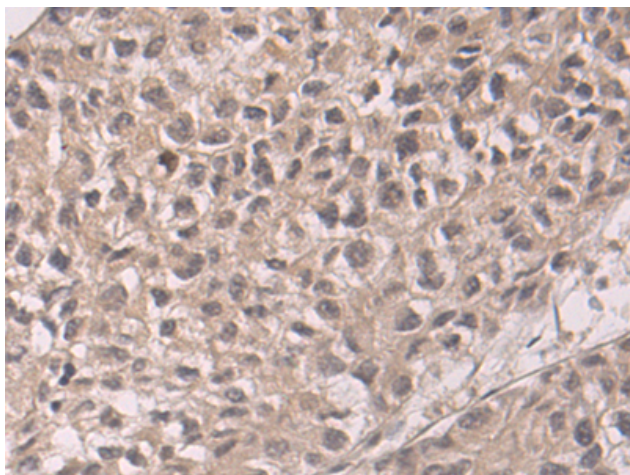
Purification: Antigen affinity purification

Species Reactivity: Human

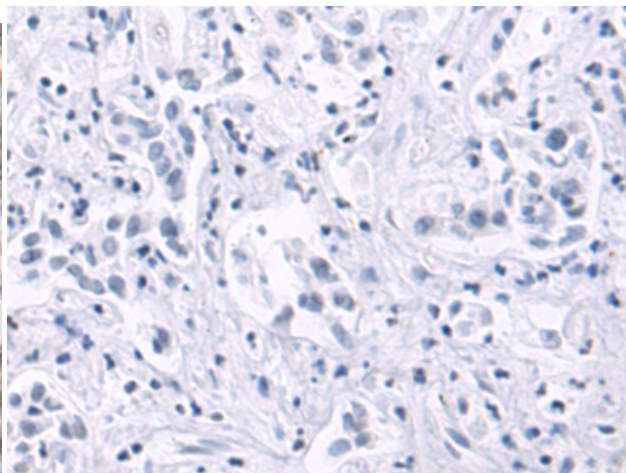
Constituents: PBS (without Mg²⁺ and Ca²⁺), pH 7.4, 150 mM NaCl, 0.05% Sodium Azide and 40% glycerol

Research Areas: Epigenetics and Nuclear Signaling

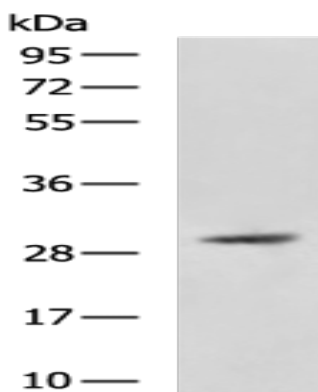
Storage & Shipping: Store at -20°C. Avoid repeated freezing and thawing



Immunohistochemistry analysis of paraffin embedded Human liver cancer tissue using 216803 (SPIN2B Antibody) at a dilution of 1/50 (Nucleus and Cytoplasm).



In comparison with the IHC on the left, the same paraffin-embedded Human liver cancer tissue is first treated with the fusion protein and then with 216803 (Anti-SPIN2B Antibody) at dilution 1/50.



Gel: 8% SDS-PAGE, Lysate: 40 μ g;
Lane: HeLa cell lysate;
Primary antibody: 216803 (SPIN2B Antibody) at dilution 1/500;
Secondary antibody: HRP-conjugated Goat anti rabbit IgG at 1/5000 dilution;
Exposure time: 30 seconds