

## SPIC RABBIT PAB

**Cat.#:** S218213

**Product Name:** Anti-SPIC Rabbit Polyclonal Antibody

**Synonyms:** SPI-C

**UNIPROT ID:** Q8N5J4 (Gene Accession - BC032317 )

**Background:** Controls the development of red pulp macrophages required for red blood cells recycling and iron homeostasis. Transcription factor that binds to the PU-bo,x a purine-rich DNA sequence (5'-GAGGA[AT]-3') that can act as a lymphoid-specific enhancer. Regulates VCAM1 gene expression (By similarity).

**Immunogen:** Full length fusion protein

**Applications:** ELISA, IHC

**Recommended Dilutions:** IHC: 40-250; ELISA: 5000-10000

**Host Species:** Rabbit

**Clonality:** Rabbit Polyclonal

**Isotype:** Immunogen-specific rabbit IgG

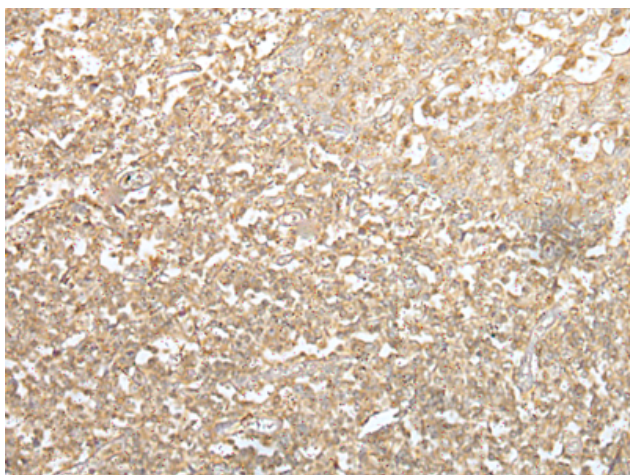
**Purification:** Antigen affinity purification

**Species Reactivity:** Human

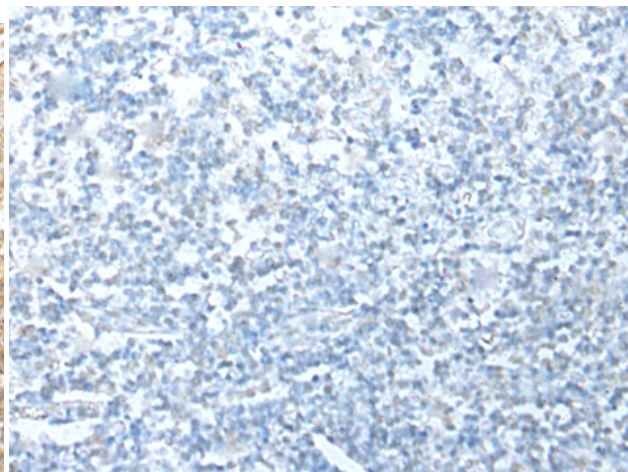
**Constituents:** PBS (without Mg<sup>2+</sup> and Ca<sup>2+</sup>), pH 7.4, 150 mM NaCl, 0.05% Sodium Azide and 40% glycerol

**Research Areas:** Epigenetics and Nuclear Signaling

**Storage & Shipping:** Store at -20°C. Avoid repeated freezing and thawing



Immunohistochemistry analysis of paraffin embedded Human tonsil tissue using 218213(SPIC Antibody) at a dilution of 1/55(Nucleus).



In comparison with the IHC on the left, the same paraffin-embedded Human tonsil tissue is first treated with the fusion protein and then with 218213(Anti-SPIC Antibody) at dilution 1/55.