

## SPI1 RABBIT MAB

**Cat.#:** N262784

**Product Name:** Anti-SPI1 Rabbit Monoclonal Antibody

**Synonyms:** SPI1; Transcription factor PU.1; 31 kDa-transforming protein

**UNIPROT ID:** P17947

**Background:** Binds to the PU-box, a purine-rich DNA sequence (5'-GAGGAA-3') that can act as a lymphoid-specific enhancer. This protein is a transcriptional activator that may be specifically involved in the differentiation or activation of macrophages or B-cells. Also binds RNA and may modulate pre-mRNA splicing.

**Immunogen:** A synthetic peptide of human PU.1/Spi1

**Applications:** WB,IHC-P

**Recommended Dilutions:** WB: 1/500-1/1000 IHC: 1/50-1/100

**Host Species:** Rabbit

**Clonality:** Rabbit Monoclonal

**Clone ID:** R07-4D3

**MW:** Calculated MW: 31 kDa; Observed MW: 42 kDa

**Isotype:** IgG

**Purification:** Affinity Purified

**Species Reactivity:** Human,Mouse

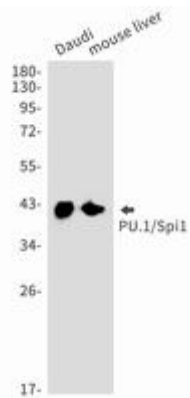
**Conjugation:** Unconjugated

**Modification:** Unmodified

**Constituents:** PBS (without Mg<sup>2+</sup> and Ca<sup>2+</sup>), pH 7.3 containing 50% glycerol, 0.5% BSA and 0.02% sodium azide

**Research Areas:** Immunology

**Storage & Shipping:** Store at -20°C. Avoid repeated freezing and thawing



Western blot analysis of PU.1/Spi1 in Daudi, mouse liver lysates using SPI1 antibody.