

## SPI1 RABBIT MAB

**Cat.#:** N263514

**Product Name:** Anti-SPI1 Rabbit Monoclonal Antibody

**Synonyms:** Dis1; PU.1; Dis-1; Sfpil; Spi-1; Sfp1; Tcfpu.1

**UNIPROT ID:** P17433

**Background:** Binds to the PU-box, a purine-rich DNA sequence (5'-GAGGAA-3') that can act as a lymphoid-specific enhancer. This protein is a transcriptional activator that may be specifically involved in the differentiation or activation of macrophages or B-cells. Also binds RNA and may modulate pre-mRNA splicing.

**Immunogen:** A synthetic peptide of mouse PU.1/Spil

**Applications:** WB,IHC-F,IHC-P,ICC/IF,IP

**Recommended Dilutions:** WB: 1/500-1/1000 IHC: 1/50-1/100 IF: 1/50-1/200 IP: 1/20

**Host Species:** Rabbit

**Clonality:** Rabbit Monoclonal

**Clone ID:** R02-1D7

**MW:** Calculated MW: 31 kDa; Observed MW: 31 kDa

**Isotype:** IgG

**Purification:** Affinity Purified

**Species Reactivity:** Human,Mouse,Hamster,Rat

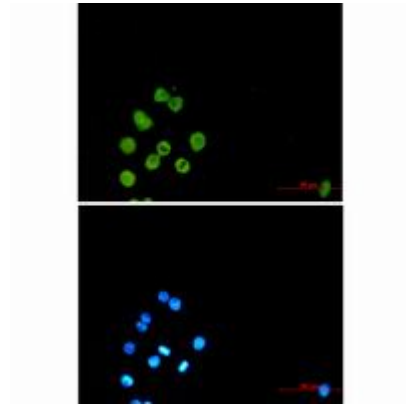
**Conjugation:** Unconjugated

**Modification:** Unmodified

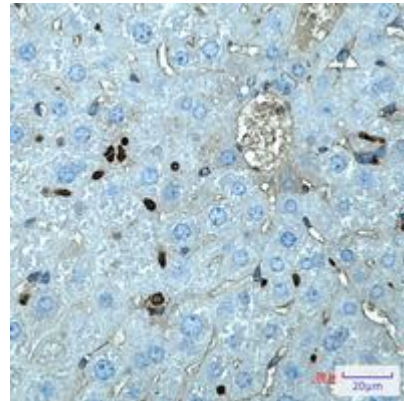
**Constituents:** PBS (without Mg<sup>2+</sup> and Ca<sup>2+</sup>), pH 7.3 containing 50% glycerol, 0.5% BSA and 0.02% sodium azide

**Research Areas:** Immunology

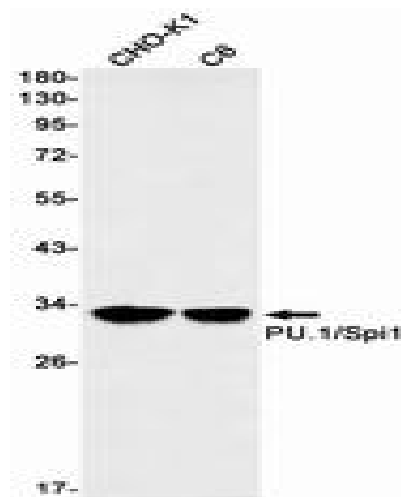
**Storage & Shipping:** Store at -20°C. Avoid repeated freezing and thawing



Immunocytochemistry analysis of PU.1/Spi1 (green) in Raw264.7 using PU.1/Spi1 antibody, and DAPI (blue)



Immunohistochemistry analysis of paraffin-embedded mouse liver using SPl1 antibody. High-pressure and temperature Sodium Citrate pH 6.0 was used for antigen retrieval.



Western blot analysis of PU.1/Spi1 in CHO-K1, C6 lysates using PU.1/Spi1 antibody.