

## SPDL1 RABBIT PAB

**Cat.#:** S216804

**Product Name:** Anti-SPDL1 Rabbit Polyclonal Antibody

**Synonyms:** CCDC99

**UNIPROT ID:** Q96EA4 (Gene Accession - BC012568 )

**Background:** This gene encodes a coiled-coil domain-containing protein that functions in mitotic spindle formation and chromosome segregation. The encoded protein plays a role in coordinating microtubule attachment by promoting recruitment of dynein proteins, and in mitotic checkpoint signaling.

**Immunogen:** Fusion protein of human SPDL1

**Applications:** ELISA, WB, IHC

**Recommended Dilutions:** IHC: 100-200;WB: 500-2000;ELISA: 5000-10000

**Host Species:** Rabbit

**Clonality:** Rabbit Polyclonal

**Isotype:** Immunogen-specific rabbit IgG

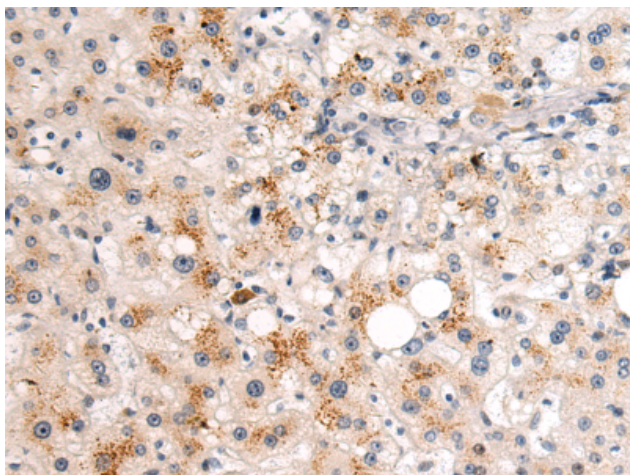
**Purification:** Antigen affinity purification

**Species Reactivity:** Human, Mouse

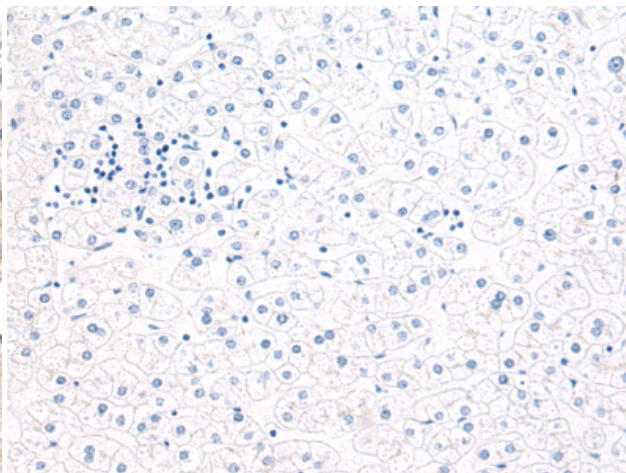
**Constituents:** PBS (without Mg<sup>2+</sup> and Ca<sup>2+</sup>), pH 7.4, 150 mM NaCl, 0.05% Sodium Azide and 40% glycerol

**Research Areas:** Cell Biology

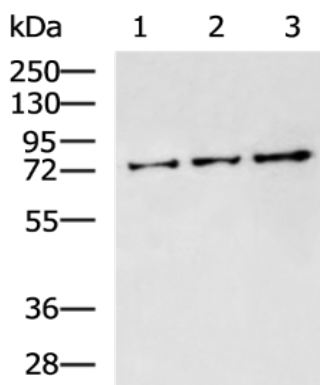
**Storage & Shipping:** Store at -20°C. Avoid repeated freezing and thawing



Immunohistochemistry analysis of paraffin embedded Human liver cancer tissue using 216804(SPDL1 Antibody) at a dilution of 1/110(Cytoplasm).



In comparison with the IHC on the left, the same paraffin-embedded Human liver cancer tissue is first treated with the fusion protein and then with 216804(Anti-SPDL1 Antibody) at dilution 1/110.



Gel: 8%SDS-PAGE, Lysate: 40 µg;  
 Lane 1-3: K562 cell, Mouse testis tissue, 293T cell lysates;  
 Primary antibody: 216804(SPDL1 Antibody) at dilution 1/800;  
 Secondary antibody: HRP-conjugated Goat anti rabbit IgG at 1/5000 dilution;  
 Exposure time: 5 minutes