

SPATA6 RABBIT PAB

Cat.#: S216864

Product Name: Anti-SPATA6 Rabbit Polyclonal Antibody

Synonyms: HASH; SRF1; SRF-1

UNIPROT ID: Q9NWH7 (Gene Accession - BC020660)

Background: SPATA6 (spermatogenesis associated 6), also known as SRF1, is a 488 amino acid secreted protein that may be involved in spermatid maturation or sperm function. SPATA6 is expressed during embryonic development and is localized in neural tube, somites and limb buds of mouse embryo. Existing as two isoforms produced by alternative splicing events, the gene encoding SPATA6 maps to mouse chromosome 4 and human chromosome 1.

Immunogen: Fusion protein of human SPATA6

Applications: ELISA, WB, IHC

Recommended Dilutions: IHC: 25-100;WB: 200-1000;ELISA: 1000-2000

Host Species: Rabbit

Clonality: Rabbit Polyclonal

Isotype: Immunogen-specific rabbit IgG

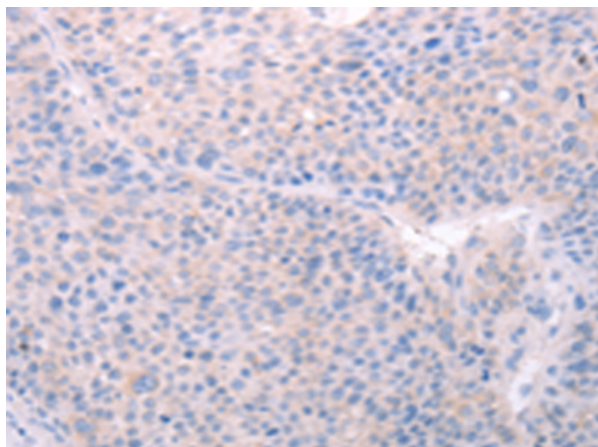
Purification: Antigen affinity purification

Species Reactivity: Human, Mouse, Rat

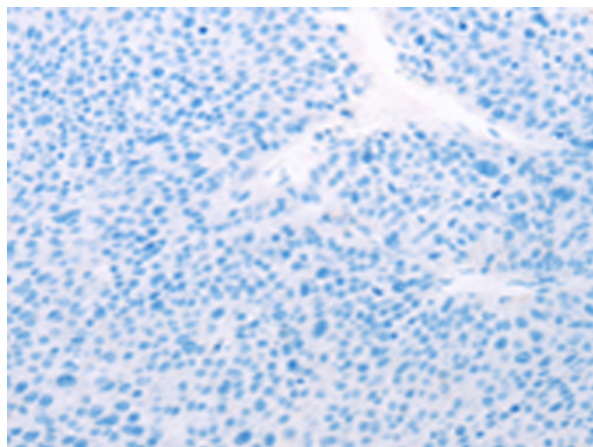
Constituents: PBS (without Mg²⁺ and Ca²⁺), pH 7.4, 150 mM NaCl, 0.05% Sodium Azide and 40% glycerol

Research Areas: Stem Cells, Developmental Biology

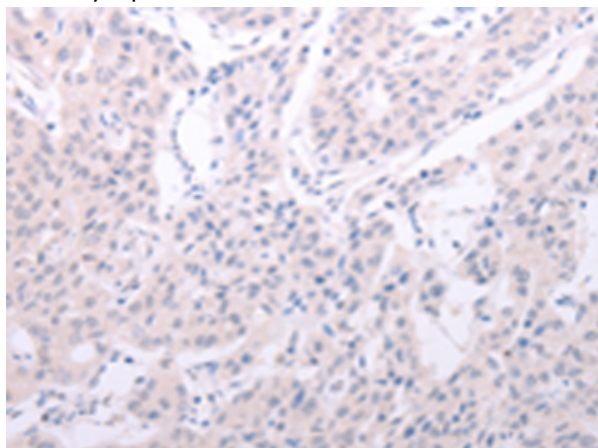
Storage & Shipping: Store at -20°C. Avoid repeated freezing and thawing



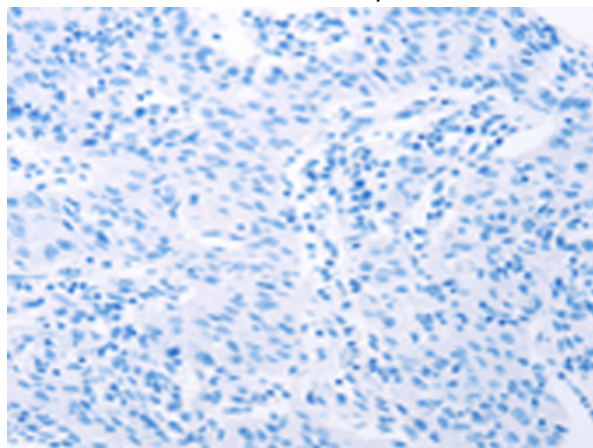
Immunohistochemistry analysis of paraffin embedded Human liver cancer tissue using 216864(SPATA6 Antibody) at a dilution of 1/40(Cytoplasm).



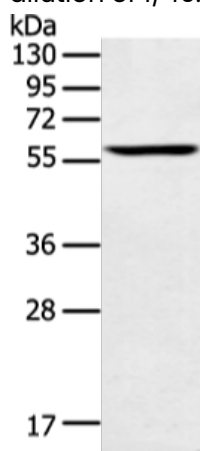
In comparison with the IHC on the left, the same paraffin-embedded Human liver cancer tissue is first treated with the fusion protein and then with 216864(Anti-SPATA6 Antibody) at dilution 1/40.



The image on the left is immunohistochemistry of paraffin-embedded Human lung cancer tissue using 216864(Anti-SPATA6 Antibody) at a dilution of 1/40.



In comparison with the IHC on the left, the same paraffin-embedded Human lung cancer tissue is first treated with fusion protein and then with D221383(Anti-SPATA6 Antibody) at dilution 1/40.



Gel: 8%SDS-PAGE, Lysate: 40 µg;
 Lane: Human lung cancer tissue;
 Primary antibody: 216864(SPATA6 Antibody) at dilution 1/200;
 Secondary antibody: Goat anti rabbit IgG at 1/8000 dilution;
 Exposure time: 10 seconds



Product Description

Pioneering GTPase and Oncogene Product Development since 2010
