

SPATA20 RABBIT PAB

Cat.#: S220209

Product Name: Anti-SPATA20 Rabbit Polyclonal Antibody

Synonyms: SSP411; Tisp78

UNIPROT ID: Q8TB22 (Gene Accession - NP_001245301)

Background: The protein may play a role in fertility regulation. It were significantly upregulated in individual bile samples from Cholangiocarcinoma patients by Western blotting and Immunohistochemistry, relative to normal tissues. It acts as a potential serum diagnostic biomarker for Cholangiocarcinoma.

Immunogen: Synthetic peptide of human SPATA20

Applications: ELISA, WB, IHC

Recommended Dilutions: IHC: 100-300; WB: 500-2000; ELISA: 2000-10000

Host Species: Rabbit

Clonality: Rabbit Polyclonal

Isotype: Immunogen-specific rabbit IgG

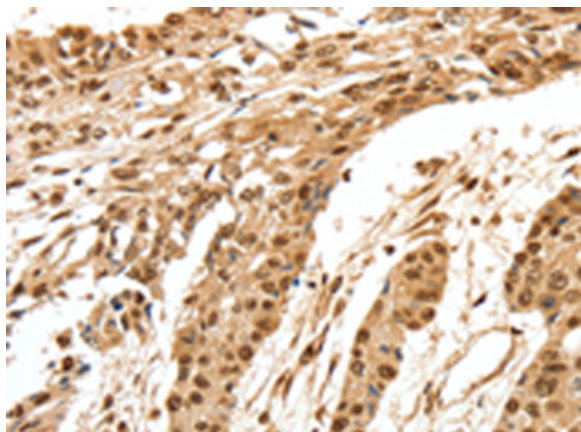
Purification: Antigen affinity purification

Species Reactivity: Human

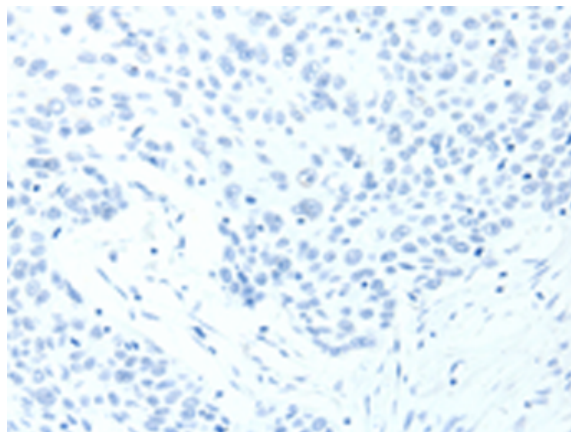
Constituents: PBS (without Mg²⁺ and Ca²⁺), pH 7.4, 150 mM NaCl, 0.05% Sodium Azide and 40% glycerol

Research Areas: Cancer, Developmental Biology

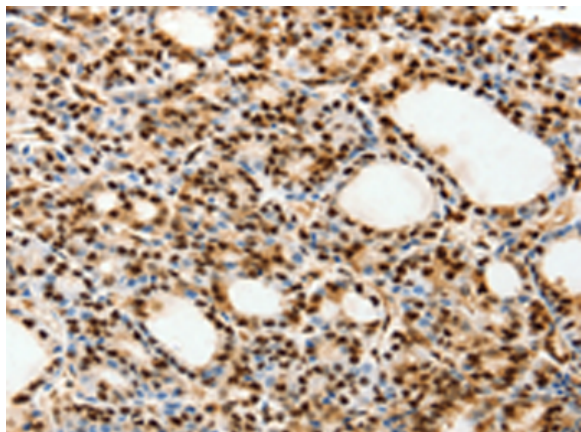
Storage & Shipping: Store at -20°C. Avoid repeated freezing and thawing



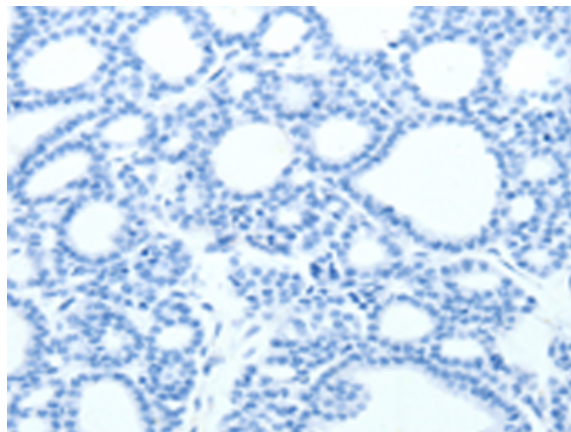
Immunohistochemistry analysis of paraffin embedded Human esophagus cancer tissue using 220209(SPATA20 Antibody) at a dilution of 1/70(Nucleus).



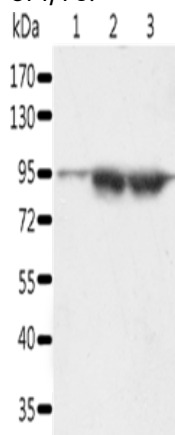
In comparison with the IHC on the left, the same paraffin-embedded Human esophagus cancer tissue is first treated with the synthetic peptide and then with 220209(Anti-SPATA20 Antibody) at dilution 1/70.



The image on the left is immunohistochemistry of paraffin-embedded Human thyroid cancer tissue using 220209(Anti-SPATA20 Antibody) at a dilution of 1/70.



In comparison with the IHC on the left, the same paraffin-embedded Human thyroid cancer tissue is first treated with synthetic peptide and then with D261141(Anti-SPATA20 Antibody) at dilution 1/70.



Gel: 10%SDS-PAGE, Lysate: 60 µg;
Lane 1-3: A549 cells, Incap cells, human seminoma tissue;
Primary antibody: 220209(SPATA20 Antibody) at dilution 1/1000;
Secondary antibody: Goat anti rabbit IgG at 1/8000 dilution;
Exposure time: 5 minutes



Product Description

Pioneering GTPase and Oncogene Product Development since 2010
