

## SPATA17 RABBIT PAB

**Cat.#:** S216813

**Product Name:** Anti-SPATA17 Rabbit Polyclonal Antibody

**Synonyms:** IQCH, MSRG11, MSRG-11, RP11-144C20.1

**UNIPROT ID:** Q96L03 (Gene Accession - BC014608 )

**Background:** Spata17 gene, which called MSRG11, by digital differential display of ESTs found only in testis. The deduced 292-amino acid protein was considered to be a member of the family of calmodulin (CaM)-binding proteins because it contained 3 short CaM-binding motifs containing conserved ile and gln residues (IQ motif). Spata17 protein was most abundant in the cytoplasm of round spermatids and elongating spermatids within seminiferous tubules of the adult testis. Expression gradually decreased in the manipulated testis of animals that underwent experimental unilateral cryptorchidism. Transient transfection experiments with a Spata17 expression construct in cultured spermatogonia GC-1 cells indicated that Spata17 accelerated apoptosis in a dose-dependent manner.

**Immunogen:** Fusion protein of human SPATA17

**Applications:** ELISA, WB, IHC

**Recommended Dilutions:** IHC: 25-100;WB: 200-1000;ELISA: 1000-5000

**Host Species:** Rabbit

**Clonality:** Rabbit Polyclonal

**Isotype:** Immunogen-specific rabbit IgG

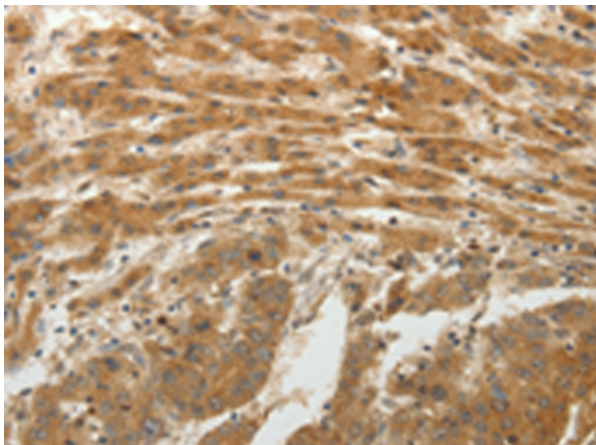
**Purification:** Antigen affinity purification

**Species Reactivity:** Human

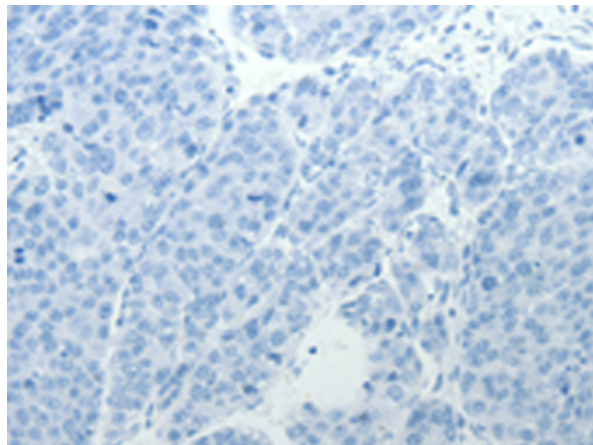
**Constituents:** PBS (without Mg<sup>2+</sup> and Ca<sup>2+</sup>), pH 7.4, 150 mM NaCl, 0.05% Sodium Azide and 40% glycerol

**Research Areas:** Signal Transduction

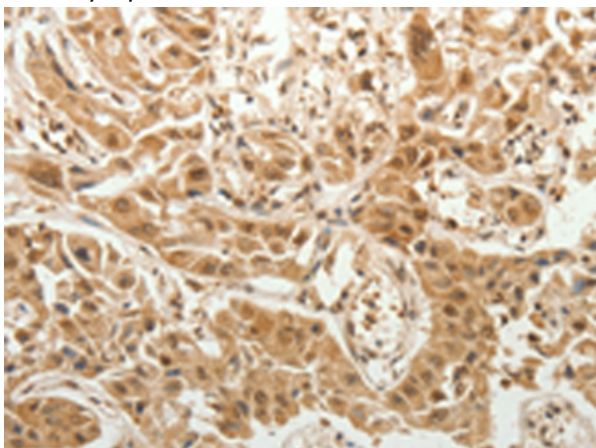
**Storage & Shipping:** Store at -20°C. Avoid repeated freezing and thawing



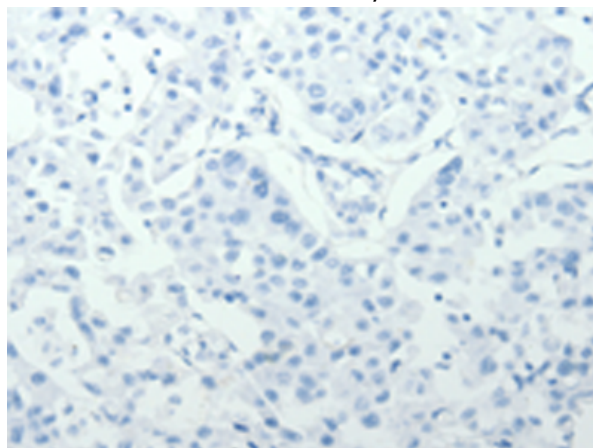
Immunohistochemistry analysis of paraffin embedded Human liver cancer tissue using 216813(SPATA17 Antibody) at a dilution of 1/25(Cytoplasm).



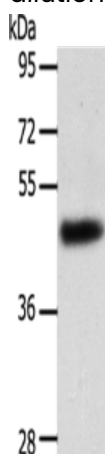
In comparison with the IHC on the left, the same paraffin-embedded Human liver cancer tissue is first treated with the fusion protein and then with 216813(Anti-SPATA17 Antibody) at dilution 1/25.



The image on the left is immunohistochemistry of paraffin-embedded Human lung cancer tissue using 216813(Anti-SPATA17 Antibody) at a dilution of 1/25.



In comparison with the IHC on the left, the same paraffin-embedded Human lung cancer tissue is first treated with fusion protein and then with D221285(Anti-SPATA17 Antibody) at dilution 1/25.



Gel: 10%SDS-PAGE, Lysate: 40 µg;  
Lane: Human liver cancer tissue;  
Primary antibody: 216813(SPATA17 Antibody) at dilution 1/400;  
Secondary antibody: Goat anti rabbit IgG at 1/8000 dilution;  
Exposure time: 1 minute



# Product Description

Pioneering GTPase and Oncogene Product Development since 2010

---