

## SPAK RABBIT MAB

**Cat.#:** N263557

**Product Name:** Anti-SPAK Rabbit Monoclonal Antibody

**Synonyms:** STK39; SPAK; STE20/SPS1-related proline-alanine-rich protein kinase; Ste-20-related kinase; DCHT; Serine/threonine-protein kinase 39

**UNIPROT ID:** Q9UEW8

**Background:** May act as a mediator of stress-activated signals.

**Immunogen:** A synthetic peptide of human SPAK

**Applications:** WB,IHC-P

**Recommended Dilutions:** WB: 1/500-1/1000 IHC: 1/50-1/100

**Host Species:** Rabbit

**Clonality:** Rabbit Monoclonal

**Clone ID:** R06-2B0

**MW:** Calculated MW: 59 kDa; Observed MW: 65 kDa

**Isotype:** IgG

**Purification:** Affinity Purified

**Species Reactivity:** Human

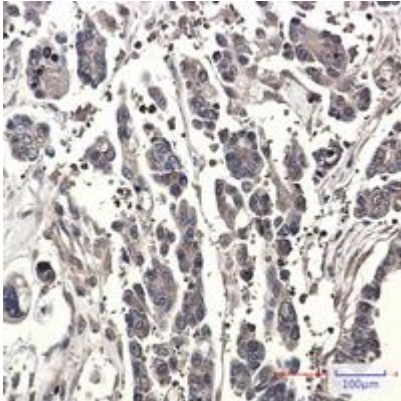
**Conjugation:** Unconjugated

**Modification:** Unmodified

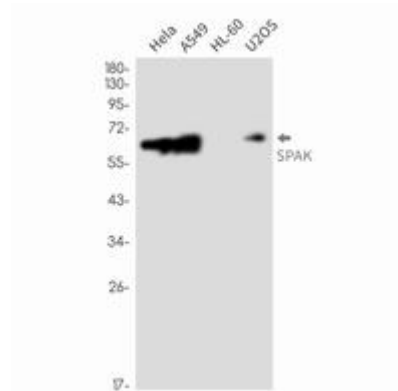
**Constituents:** PBS (without Mg<sup>2+</sup> and Ca<sup>2+</sup>), pH 7.3 containing 50% glycerol, 0.5% BSA and 0.02% sodium azide

**Research Areas:** -

**Storage & Shipping:** Store at -20°C. Avoid repeated freezing and thawing



Immunohistochemistry analysis of paraffin-embedded Human Cholangiocarcinoma using SPAK antibody. High-pressure and temperature Sodium Citrate pH 6.0 was used for antigen retrieval.



Western blot analysis of SPAK in HeLa, A549, HL-60, U2OS lysates using SPAK antibody.