

SOX13 RABBIT PAB

Cat.#: S213971

Product Name: Anti-SOX13 Rabbit Polyclonal Antibody

Synonyms: ICA12; Sox-13

UNIPROT ID: Q9UN79 (Gene Accession - NP_005677)

Background: This gene encodes a member of the SOX (SRY-related HMG-box) family of transcription factors involved in the regulation of embryonic development and in the determination of cell fate. The encoded protein may act as a transcriptional regulator after forming a protein complex with other proteins. It has also been determined to be a type-1 diabetes autoantigen, also known as islet cell antibody 12.

Immunogen: Synthetic peptide of human SOX13

Applications: ELISA, WB, IHC

Recommended Dilutions: IHC: 50-100;WB: 500-2000;ELISA: 2000-5000

Host Species: Rabbit

Clonality: Rabbit Polyclonal

Isotype: Immunogen-specific rabbit IgG

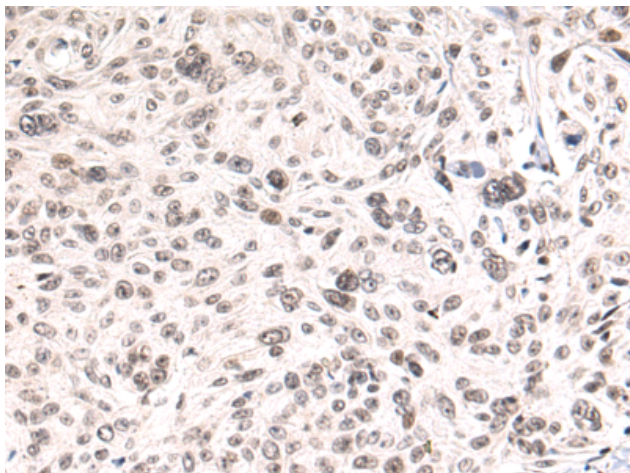
Purification: Antigen affinity purification

Species Reactivity: Human, Mouse

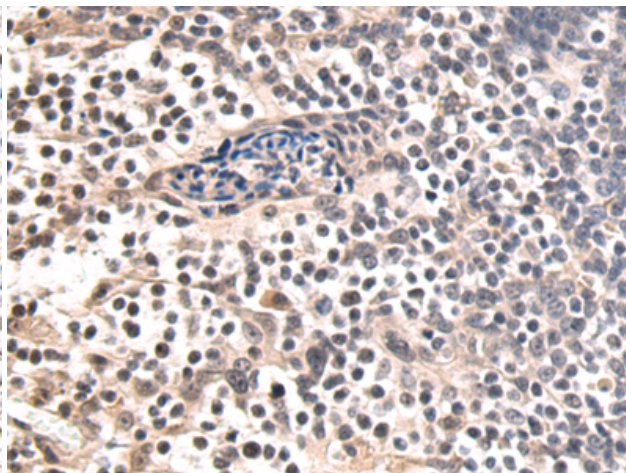
Constituents: PBS (without Mg²⁺ and Ca²⁺), pH 7.4, 150 mM NaCl, 0.05% Sodium Azide and 40% glycerol

Research Areas: Epigenetics and Nuclear Signaling, Neuroscience

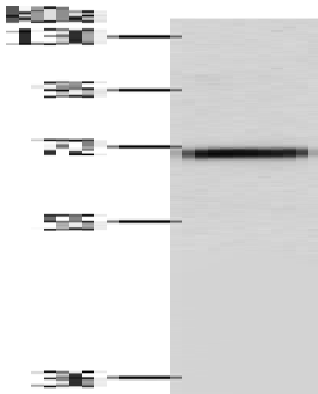
Storage & Shipping: Store at -20°C. Avoid repeated freezing and thawing



Immunohistochemistry analysis of paraffin-embedded Human cervical cancer tissue using 213971(SOX13 Antibody) at a dilution of 1/50(Nucleus).



Immunohistochemistry analysis of paraffin-embedded Human tonsil tissue using 213971(Anti-SOX13 Antibody) at a dilution of 1/50.



Gel: 10%SDS-PAGE, Lysate: 40 μ g;
Lane: Mouse liver tissue lysate;
Primary antibody: 213971(SOX13 Antibody) at dilution 1/800;
Secondary antibody: Goat anti rabbit IgG at 1/8000 dilution;
Exposure time: 1 minute