

SOX11 RABBIT PAB

Cat.#: S220965

Product Name: Anti-SOX11 Rabbit Polyclonal Antibody

Synonyms: MRD27

UNIPROT ID: P35716 (Gene Accession - NP_003099)

Background: This intronless gene encodes a member of the SOX (SRY-related HMG-box) family of transcription factors involved in the regulation of embryonic development and in the determination of the cell fate. The encoded protein may act as a transcriptional regulator after forming a protein complex with other proteins. The protein may function in the developing nervous system and play a role in tumorigenesis.

Immunogen: Synthetic peptide of human SOX11

Applications: ELISA, IHC

Recommended Dilutions: IHC: 25-100; ELISA: 2000-5000

Host Species: Rabbit

Clonality: Rabbit Polyclonal

Isotype: Immunogen-specific rabbit IgG

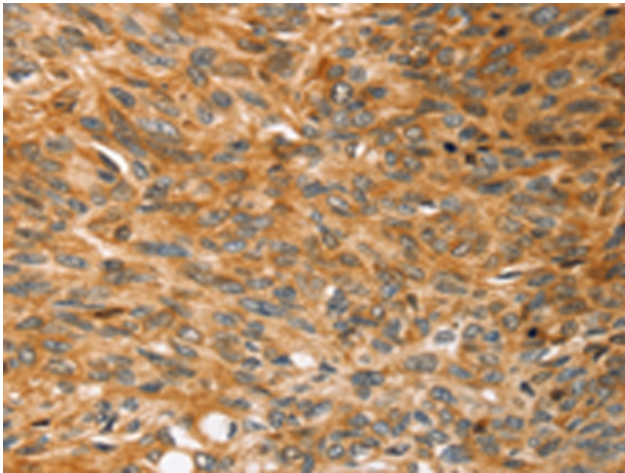
Purification: Antigen affinity purification

Species Reactivity: Human, Mouse, Rat

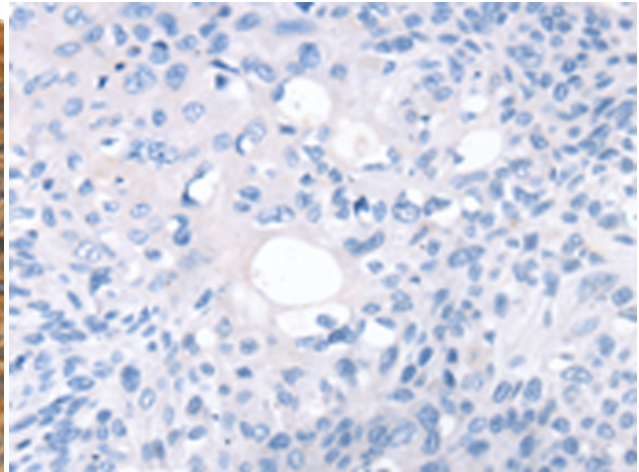
Constituents: PBS (without Mg²⁺ and Ca²⁺), pH 7.4, 150 mM NaCl, 0.05% Sodium Azide and 40% glycerol

Research Areas: Epigenetics and Nuclear Signaling, Cancer, Neuroscience, Stem Cells

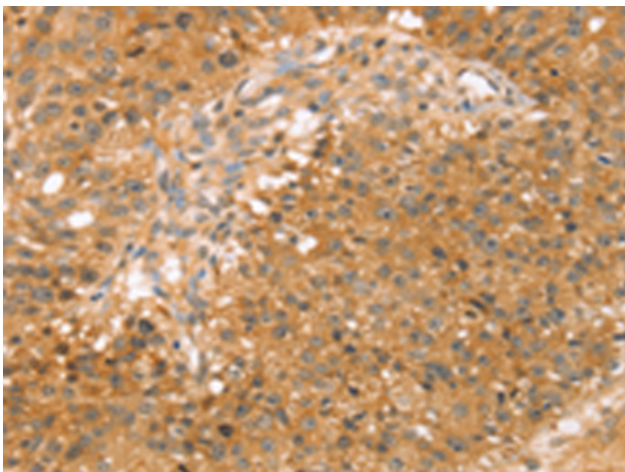
Storage & Shipping: Store at -20°C. Avoid repeated freezing and thawing



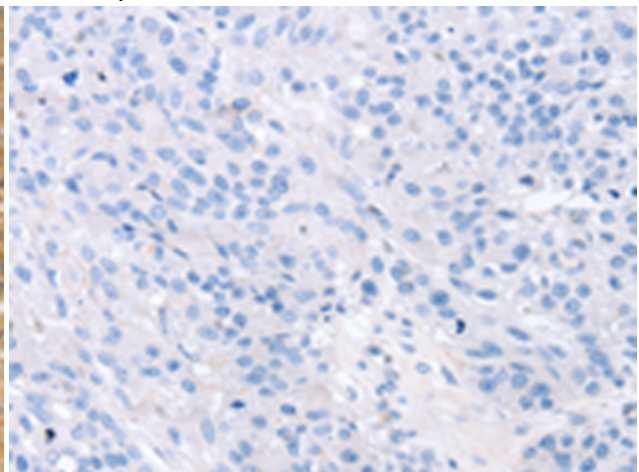
Immunohistochemistry analysis of paraffin embedded Human esophagus cancer tissue using 220965(SOX11 Antibody) at a dilution of 1/20(Cytoplasm).



In comparison with the IHC on the left, the same paraffin-embedded Human esophagus cancer tissue is first treated with the synthetic peptide and then with 220965(Anti-SOX11 Antibody) at dilution 1/20.



The image on the left is immunohistochemistry of paraffin-embedded Human breast cancer tissue using 220965(Anti-SOX11 Antibody) at a dilution of 1/20.



In comparison with the IHC on the left, the same paraffin-embedded Human breast cancer tissue is first treated with synthetic peptide and then with D262295(Anti-SOX11 Antibody) at dilution 1/20.