

## SOGA1 RABBIT PAB

**Cat.#:** S221651

**Product Name:** Anti-SOGA1 Rabbit Polyclonal Antibody

**Synonyms:** SOGA; KIAA0889; C20orf117

**UNIPROT ID:** O94964 (Gene Accession - NP\_954650 )

**Background:** Regulates autophagy by playing a role in the reduction of glucose production in an adiponectin- and insulin-dependent manner.

**Immunogen:** Synthetic peptide of human SOGA1

**Applications:** ELISA, IHC

**Recommended Dilutions:** IHC: 20-100; ELISA: 5000-10000

**Host Species:** Rabbit

**Clonality:** Rabbit Polyclonal

**Isotype:** Immunogen-specific rabbit IgG

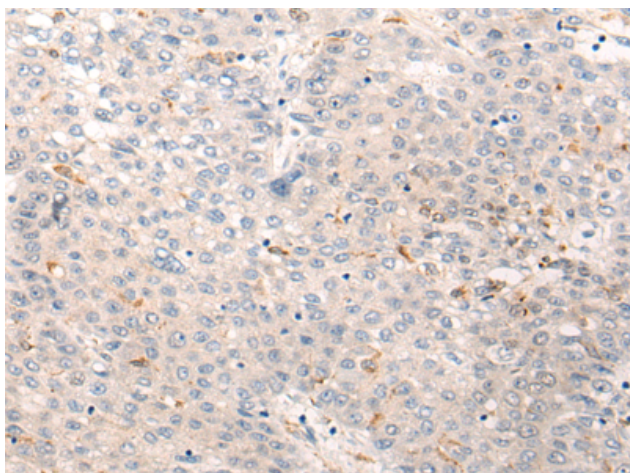
**Purification:** Antigen affinity purification

**Species Reactivity:** Human

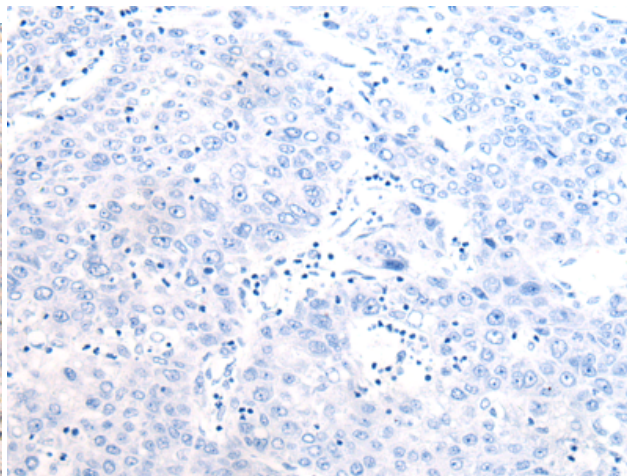
**Constituents:** PBS (without Mg<sup>2+</sup> and Ca<sup>2+</sup>), pH 7.4, 150 mM NaCl, 0.05% Sodium Azide and 40% glycerol

**Research Areas:** Cell Biology

**Storage & Shipping:** Store at -20°C. Avoid repeated freezing and thawing



Immunohistochemistry analysis of paraffin embedded Human liver cancer tissue using 221651(SOGA1 Antibody) at a dilution of 1/30(Cytoplasm).



In comparison with the IHC on the left, the same paraffin-embedded Human liver cancer tissue is first treated with the synthetic peptide and then with 221651(Anti-SOGA1 Antibody) at dilution 1/30.