

## SOCS1 RABBIT PAB

**Cat.#:** S219997

**Product Name:** Anti-SOCS1 Rabbit Polyclonal Antibody

**Synonyms:** JAB; CIS1; SSI1; TIP3; CISH1; SSI-1; TIP-3; AISIMD; SOCS-1

**UNIPROT ID:** O15524 (Gene Accession - NP\_003736 )

**Background:** This gene encodes a member of the STAT-induced STAT inhibitor (SSI), also known as suppressor of cytokine signaling (SOCS), family. SSI family members are cytokine-inducible negative regulators of cytokine signaling. The expression of this gene can be induced by a subset of cytokines, including IL2, IL3 erythropoietin (EPO), CSF2/GM-CSF, and interferon (IFN)-gamma. The protein encoded by this gene functions downstream of cytokine receptors, and takes part in a negative feedback loop to attenuate cytokine signaling. Knockout studies in mice suggested the role of this gene as a modulator of IFN-gamma action, which is required for normal postnatal growth and survival.

**Immunogen:** Synthetic peptide of human SOCS1

**Applications:** ELISA, WB, IHC

**Recommended Dilutions:** IHC: 100-300;WB: 1000-5000;ELISA: 2000-10000

**Host Species:** Rabbit

**Clonality:** Rabbit Polyclonal

**Isotype:** Immunogen-specific rabbit IgG

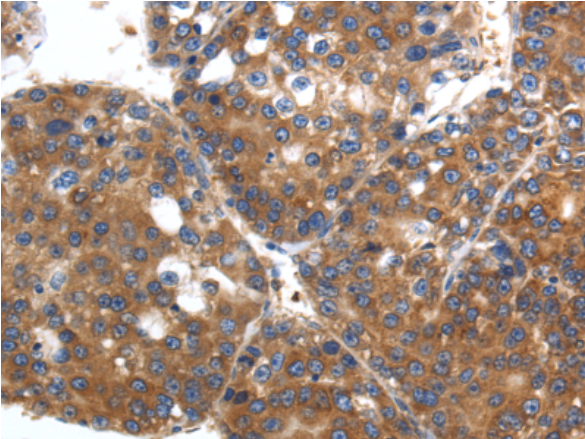
**Purification:** Antigen affinity purification

**Species Reactivity:** Human, Mouse, Rat

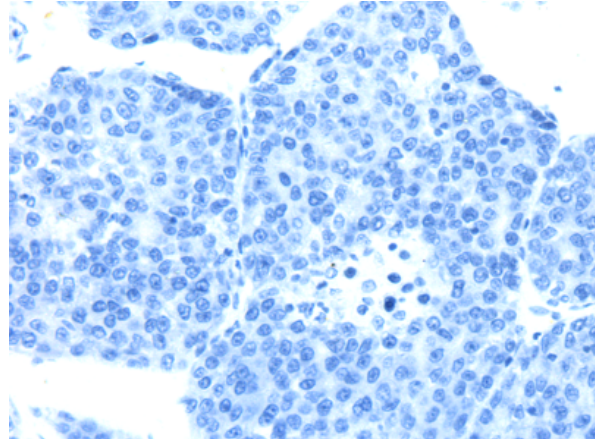
**Constituents:** PBS (without Mg<sup>2+</sup> and Ca<sup>2+</sup>), pH 7.4, 150 mM NaCl, 0.05% Sodium Azide and 40% glycerol

**Research Areas:** Signal Transduction, Epigenetics and Nuclear Signaling, Immunology

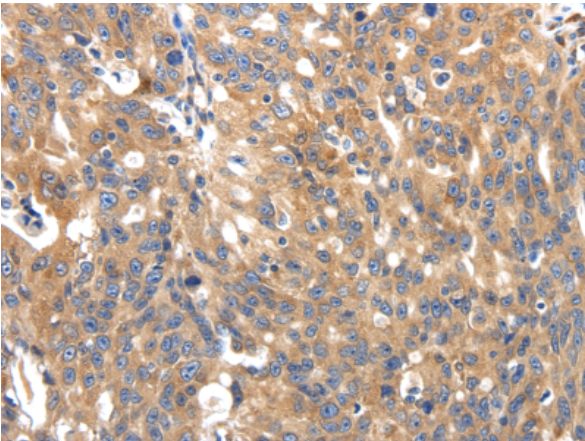
**Storage & Shipping:** Store at -20°C. Avoid repeated freezing and thawing



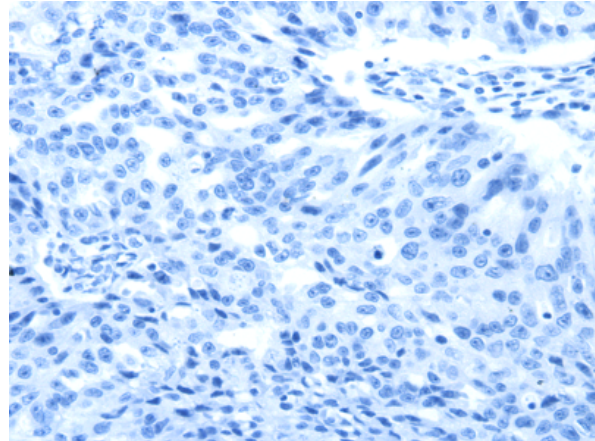
Immunohistochemistry analysis of paraffin embedded Human liver cancer tissue using 219997(SOCS1 Antibody) at a dilution of 1/90(Cytoplasm).



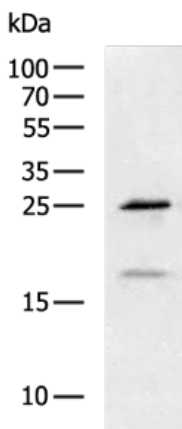
In comparison with the IHC on the left, the same paraffin-embedded Human liver cancer tissue is first treated with the synthetic peptide and then with 219997(Anti-SOCS1 Antibody) at dilution 1/90.



The image on the left is immunohistochemistry of paraffin-embedded Human ovarian cancer tissue using 219997(Anti-SOCS1 Antibody) at a dilution of 1/90.



In comparison with the IHC on the left, the same paraffin-embedded Human ovarian cancer tissue is first treated with synthetic peptide and then with D260748(Anti-SOCS1 Antibody) at dilution 1/90.



Gel: 12%SDS-PAGE, Lysate: 40 µg;  
Lane: 231 cell lysate;  
Primary antibody: 219997(SOCS1 Antibody) at dilution 1/1700;  
Secondary antibody: HRP-conjugated Goat anti rabbit IgG at 1/5000 dilution;  
Exposure time: 5 minutes



# Product Description

Pioneering GTPase and Oncogene Product Development since 2010

---