

## SNX25 RABBIT PAB

**Cat.#:** S214731

**Product Name:** Anti-SNX25 Rabbit Polyclonal Antibody

**Synonyms:** SBBI31; MSTP043

**UNIPROT ID:** Q9H3E2 (Gene Accession - NP\_114159 )

**Background:** SNX25 (sorting nexin 25), also known as SBBI31 or MSTP043, is an 840 amino acid protein suggested to function in several stages of intracellular trafficking. A member of the sorting nexin family, SNX25 contains one PX (phox homology) domain, an RGS domain and one PXA domain. May be involved in several stages of intracellular trafficking.

**Immunogen:** Synthetic peptide of human SNX25

**Applications:** ELISA, IHC

**Recommended Dilutions:** IHC: 25-100; ELISA: 1000-2000

**Host Species:** Rabbit

**Clonality:** Rabbit Polyclonal

**Isotype:** Immunogen-specific rabbit IgG

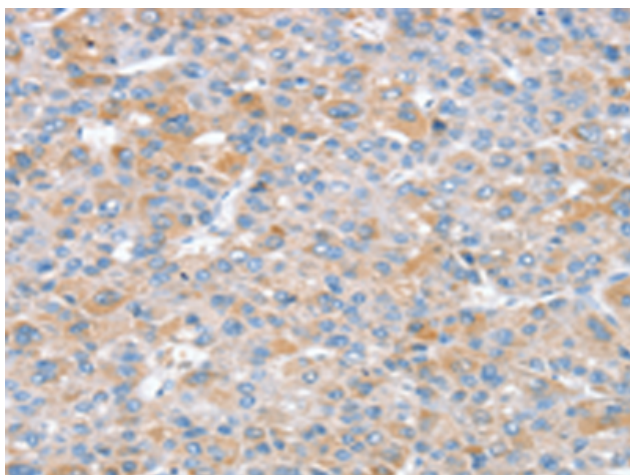
**Purification:** Antigen affinity purification

**Species Reactivity:** Human, Mouse

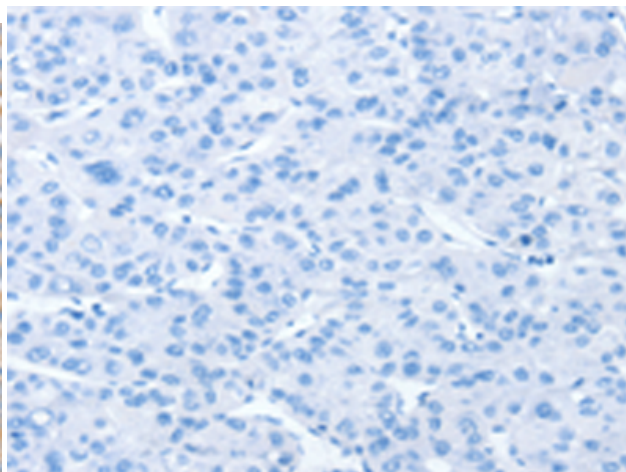
**Constituents:** PBS (without Mg<sup>2+</sup> and Ca<sup>2+</sup>), pH 7.4, 150 mM NaCl, 0.05% Sodium Azide and 40% glycerol

**Research Areas:** Signal Transduction

**Storage & Shipping:** Store at -20°C. Avoid repeated freezing and thawing



Immunohistochemistry analysis of paraffin embedded Human liver cancer tissue using 214731(SNX25 Antibody) at a dilution of 1/35(Cytoplasm).



In comparison with the IHC on the left, the same paraffin-embedded Human liver cancer tissue is first treated with the synthetic peptide and then with 214731(Anti-SNX25 Antibody) at dilution 1/35.