

SNX1 RABBIT MAB

Cat.#: N263555

Product Name: Anti-SNX1 Rabbit Monoclonal Antibody

Synonyms: SNX1; Sorting nexin-1

UNIPROT ID: Q13596

Background: May be involved in several stages of intracellular trafficking. Plays a role in targeting ligand-activated EGFR to the lysosomes for degradation after endocytosis from the cell surface and release from the Golgi.

Immunogen: A synthetic peptide of human SNX1

Applications: WB,IHC-F,IHC-P,ICC/IF

Recommended Dilutions: WB: 1/500-1/1000 IHC: 1/50-1/100 IF: 1/50-1/200

Host Species: Rabbit

Clonality: Rabbit Monoclonal

Clone ID: R02-0A4

MW: Calculated MW: 59 kDa; Observed MW: 70 kDa

Isotype: IgG

Purification: Affinity Purified

Species Reactivity: Human

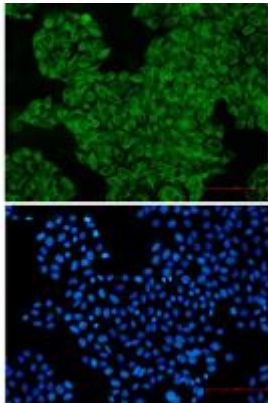
Conjugation: Unconjugated

Modification: Unmodified

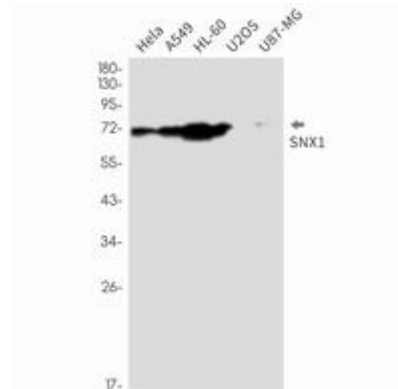
Constituents: PBS (without Mg²⁺ and Ca²⁺), pH 7.3 containing 50% glycerol, 0.5% BSA and 0.02% sodium azide

Research Areas: Signal Transduction

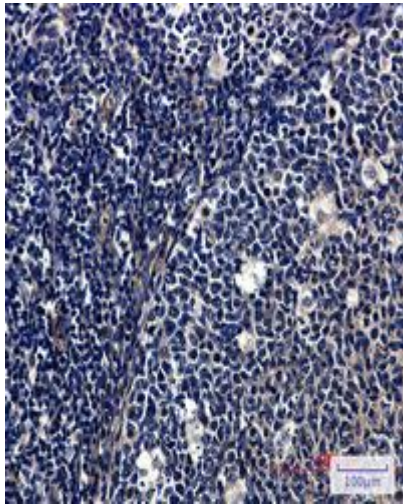
Storage & Shipping: Store at -20°C. Avoid repeated freezing and thawing



Immunocytochemistry analysis of SNX1 (green) in HeLa using SNX1 antibody, and DAPI (blue)



Western blot analysis of SNX1 in HeLa, A549, HL-60, U2OS, U87-MG lysates using SNX1 antibody.



Immunohistochemistry analysis of paraffin-embedded Human tonsil using SNX1 antibody. High-pressure and temperature Sodium Citrate pH 6.0 was used for antigen retrieval.