

## SNRPG RABBIT PAB

**Cat.#:** S222166

**Product Name:** Anti-SNRPG Rabbit Polyclonal Antibody

**Synonyms:** SMG; Sm-G

**UNIPROT ID:** P62308 (Gene Accession - NP\_003087 )

**Background:** The protein encoded by this gene is a component of the U1, U2, U4, and U5 small nuclear ribonucleoprotein complexes, precursors of the spliceosome. The encoded protein may also be a part of the U7 small nuclear ribonucleoprotein complex which participates in the processing of the 3' end of histone transcripts. Several transcript variants encoding different isoforms have been found for this gene.

**Immunogen:** Synthetic peptide of human SNRPG

**Applications:** ELISA, WB, IHC

**Recommended Dilutions:** IHC: 20-100;WB: 200-1000;ELISA: 5000-10000

**Host Species:** Rabbit

**Clonality:** Rabbit Polyclonal

**Isotype:** Immunogen-specific rabbit IgG

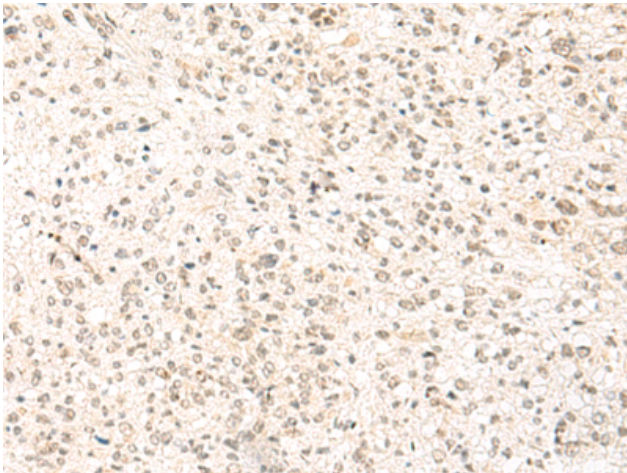
**Purification:** Antigen affinity purification

**Species Reactivity:** Human, Mouse

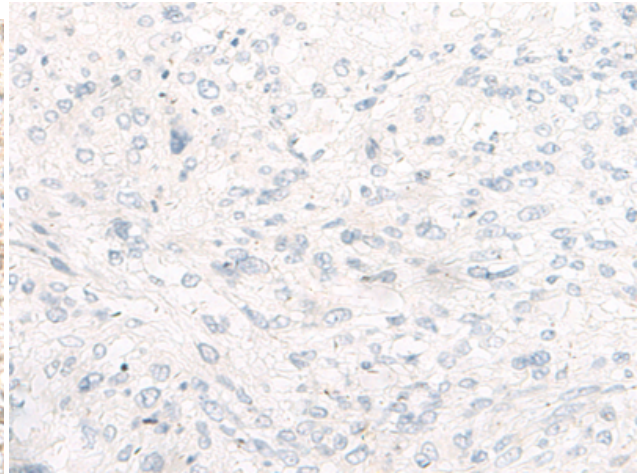
**Constituents:** PBS (without Mg<sup>2+</sup> and Ca<sup>2+</sup>), pH 7.4, 150 mM NaCl, 0.05% Sodium Azide and 40% glycerol

**Research Areas:** Epigenetics and Nuclear Signaling

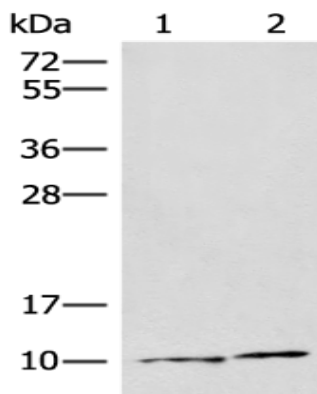
**Storage & Shipping:** Store at -20°C. Avoid repeated freezing and thawing



Immunohistochemistry analysis of paraffin embedded Human liver cancer tissue using 222166 (SNRPG Antibody) at a dilution of 1/30 (Nucleus).



In comparison with the IHC on the left, the same paraffin-embedded Human liver cancer tissue is first treated with the synthetic peptide and then with 222166 (Anti-SNRPG Antibody) at dilution 1/30.



Gel: 12% SDS-PAGE, Lysate: 40  $\mu$ g;  
Lane 1-2: Jurkat and 293T cell lysates;  
Primary antibody: 222166 (SNRPG Antibody) at dilution 1/350;  
Secondary antibody: Goat anti rabbit IgG at 1/8000 dilution;  
Exposure time: 1 minute