

## SNRPB2 RABBIT PAB

**Cat.#:** S219023

**Product Name:** Anti-SNRPB2 Rabbit Polyclonal Antibody

**Synonyms:** Msl1; U2B'

**UNIPROT ID:** P08579 (Gene Accession - BC018022 )

**Background:** The protein encoded by this gene associates with stem loop IV of U2 small nuclear ribonucleoprotein (U2 snRNP) in the presence of snRNP-A'. The encoded protein may play a role in pre-mRNA splicing. Autoantibodies from patients with systemic lupus erythematosus frequently recognize epitopes on the encoded protein. Two transcript variants encoding the same protein have been found for this gene.

**Immunogen:** Fusion protein of human SNRPB2

**Applications:** ELISA, WB, IHC

**Recommended Dilutions:** IHC: 50-300;WB: 1000-5000;ELISA: 5000-10000

**Host Species:** Rabbit

**Clonality:** Rabbit Polyclonal

**Isotype:** Immunogen-specific rabbit IgG

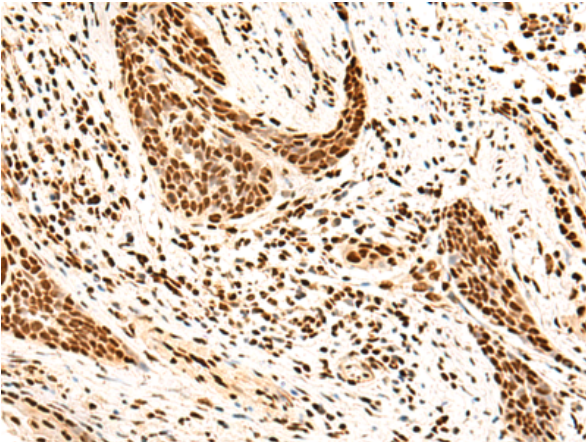
**Purification:** Antigen affinity purification

**Species Reactivity:** Human, Mouse

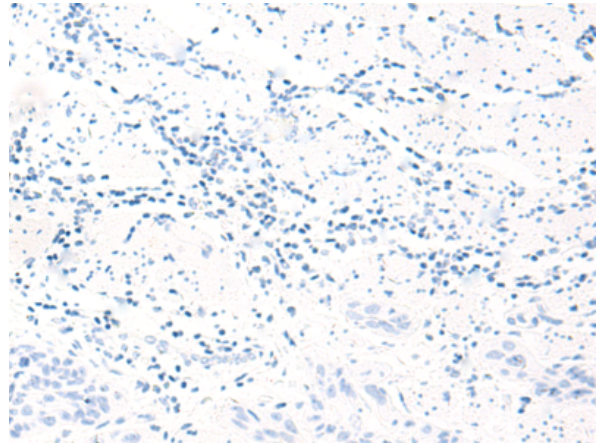
**Constituents:** PBS (without Mg<sup>2+</sup> and Ca<sup>2+</sup>), pH 7.4, 150 mM NaCl, 0.05% Sodium Azide and 40% glycerol

**Research Areas:** Epigenetics and Nuclear Signaling

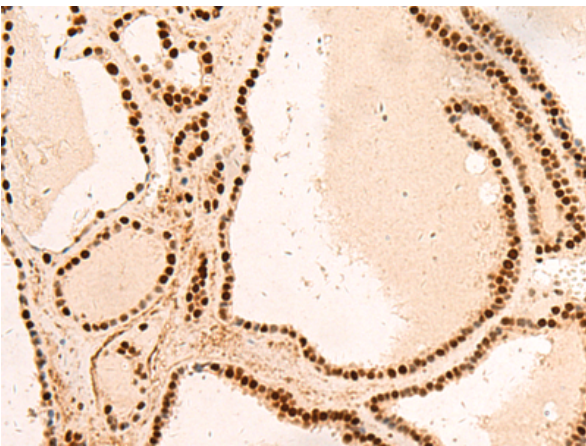
**Storage & Shipping:** Store at -20°C. Avoid repeated freezing and thawing



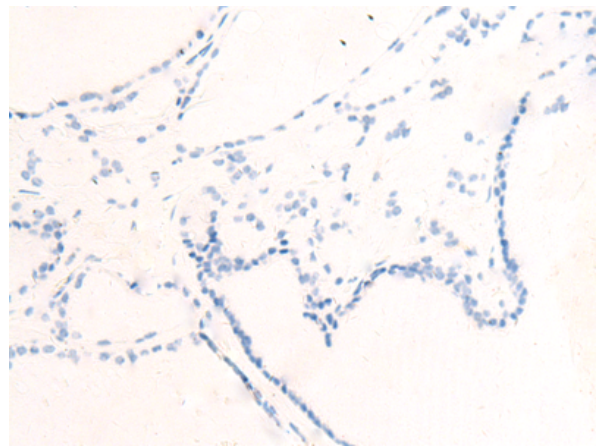
Immunohistochemistry analysis of paraffin embedded Human esophagus cancer tissue using 219023(SNRPB2 Antibody) at a dilution of 1/75(Nucleus).



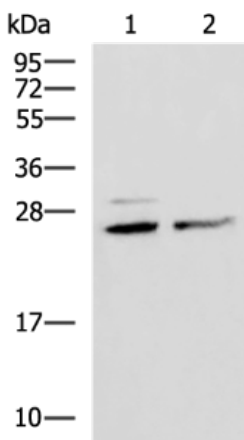
In comparison with the IHC on the left, the same paraffin-embedded Human esophagus cancer tissue is first treated with the fusion protein and then with 219023(Anti-SNRPB2 Antibody) at dilution 1/75.



The image on the left is immunohistochemistry of paraffin-embedded Human thyroid cancer tissue using 219023(Anti-SNRPB2 Antibody) at a dilution of 1/75.



In comparison with the IHC on the left, the same paraffin-embedded Human thyroid cancer tissue is first treated with fusion protein and then with D225670(Anti-SNRPB2 Antibody) at dilution 1/75.



Gel: 12%SDS-PAGE, Lysate: 40 µg;  
Lane 1-2: Hela and K562 cell lysates;  
Primary antibody: 219023(SNRPB2 Antibody) at dilution 1/1600;  
Secondary antibody: HRP-conjugated Goat anti rabbit IgG at 1/5000 dilution;  
Exposure time: 3 seconds



# Product Description

Pioneering GTPase and Oncogene Product Development since 2010

---