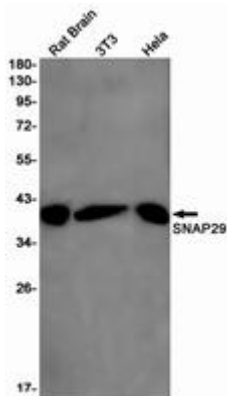


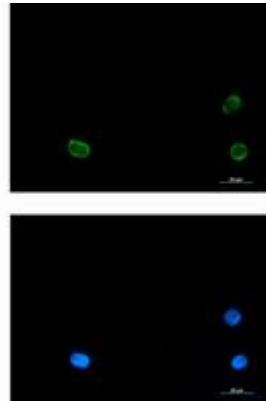
SNAP29 RABBIT MAB**Cat.#:** N262917**Product Name:** Anti-SNAP29 Rabbit Monoclonal Antibody**Synonyms:** CEDNIK; SNAP-29**UNIPROT ID:** O95721

Background: This gene, a member of the SNAP25 gene family, encodes a protein involved in multiple membrane trafficking steps. Two other members of this gene family, SNAP23 and SNAP25, encode proteins that bind a syntaxin protein and mediate synaptic vesicle membrane docking and fusion to the plasma membrane. The protein encoded by this gene binds tightly to multiple syntaxins and is localized to intracellular membrane structures rather than to the plasma membrane. While the protein is mostly membrane-bound, a significant fraction of it is found free in the cytoplasm. Use of multiple polyadenylation sites has been noted for this gene.

Immunogen: A synthetic peptide of human SNAP29**Applications:** WB, ICC/IF, IP**Recommended Dilutions:** WB: 1/500-1/1000 IF: 1/50-1/200 IP: 1/20**Host Species:** Rabbit**Clonality:** Rabbit Monoclonal**Clone ID:** R01-8C8**MW:** Calculated MW: 29 kDa; Observed MW: 29 kDa**Isotype:** IgG**Purification:** Affinity Purified**Species Reactivity:** Human, Mouse, Rat**Conjugation:** Unconjugated**Modification:** Unmodified**Constituents:** PBS (without Mg²⁺ and Ca²⁺), pH 7.3 containing 50% glycerol, 0.5% BSA and 0.02% sodium azide**Research Areas:** Neuroscience**Storage & Shipping:** Store at -20°C. Avoid repeated freezing and thawing



Western blot analysis of SNAP29 in rat Brain, 3T3, HeLa lysates using SNAP29 antibody.



Immunocytochemistry analysis of SNAP29 (green) in K562 using SNAP29 antibody, and DAPI (blue).