

## SNAP25 RABBIT PAB

**Cat.#:** N225831

**Product Name:** Anti-SNAP25 Rabbit pAb

**Synonyms:** Synaptosomal-associated protein 25; SNAP-25; Super protein; SUP; Synaptosomal-associated 25 kDa protein; SNAP25; SNAP

**UNIPROT ID:** P60880

**Background:** SNAP25 forms a core complex with the SNARE proteins syntaxin and synaptobrevin to mediate synaptic vesicle fusion with the plasma membrane during Ca<sup>2+</sup>-dependent exocytosis. This complex is responsible for exocytosis of the neurotransmitter  $\gamma$ -aminobutyric acid (GABA). Neurotransmitter release is inhibited by proteolysis of SNAP25 by botulinum toxins A and E. SNAP25 plays a secondary role as a Q-SNARE involved in endosome fusion; the protein is associated with genetic susceptibility to attention-deficit hyperactivity disorder (ADHD).

**Immunogen:** A synthesized peptide derived from human SNAP25

**Applications:** WB, ICC/IF, IP

**Recommended Dilutions:** WB: 1/500-1/1000 IF: 1/50-1/200 IP: 1/20

**Host Species:** Rabbit

**Clonality:** Rabbit Polyclonal

**Clone ID:** -

**MW:** Calculated MW: 23 kDa; Observed MW: 23 kDa

**Isotype:** IgG

**Purification:** Affinity Chromatography

**Species Reactivity:** Human, Mouse, Rat

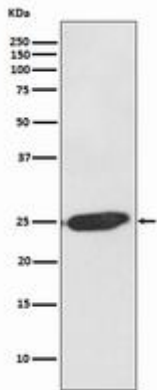
**Conjugation:** Unconjugated

**Modification:** Unmodified

**Constituents:** PBS (without Mg<sup>2+</sup> and Ca<sup>2+</sup>), pH 7.3 containing 50% glycerol, 0.5% BSA and 0.02% sodium azide

**Research Areas:** Neuroscience, SNAP25

**Storage & Shipping:** Store at -20°C. Avoid repeated freezing and thawing



Western blot analysis of SNAP25 in SH-SY5Y lysates using SNAP25 antibody.