

## SNAI3 RABBIT PAB

**Cat.#:** S217837

**Product Name:** Anti-SNAI3 Rabbit Polyclonal Antibody

**Synonyms:** SMUC; SNAIL3; ZNF293; Zfp293

**UNIPROT ID:** Q3KNW1 (Gene Accession - BC107058 )

**Background:** SNAI3 is a member of the SNAIL gene family, named for the Drosophila snail gene, which plays roles in mesodermal formation during embryogenesis

**Immunogen:** Fusion protein of human SNAI3

**Applications:** ELISA, IHC

**Recommended Dilutions:** IHC: 25-100; ELISA: 2000-5000

**Host Species:** Rabbit

**Clonality:** Rabbit Polyclonal

**Isotype:** Immunogen-specific rabbit IgG

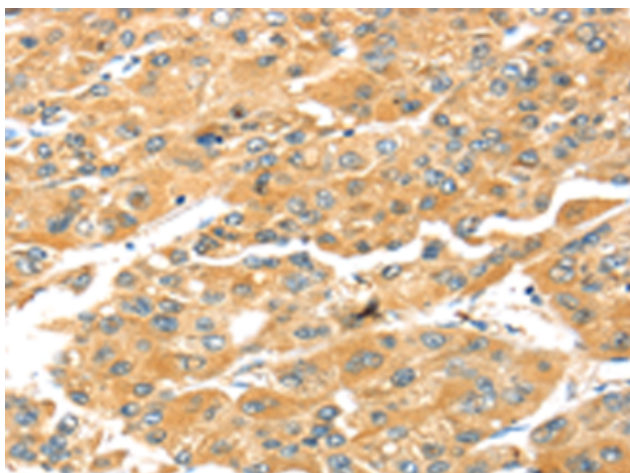
**Purification:** Antigen affinity purification

**Species Reactivity:** Human

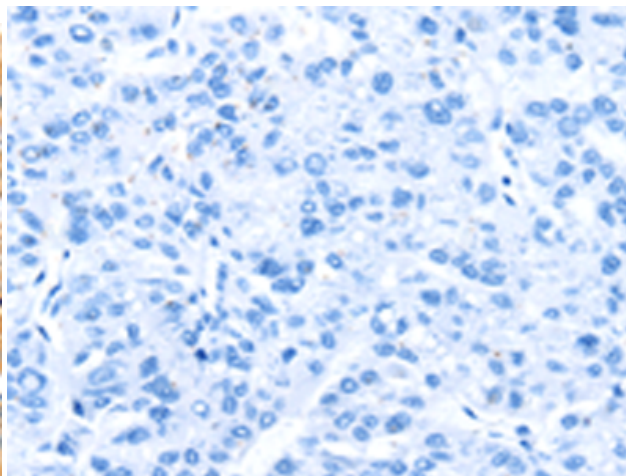
**Constituents:** PBS (without Mg<sup>2+</sup> and Ca<sup>2+</sup>), pH 7.4, 150 mM NaCl, 0.05% Sodium Azide and 40% glycerol

**Research Areas:** Epigenetics and Nuclear Signaling

**Storage & Shipping:** Store at -20°C. Avoid repeated freezing and thawing



Immunohistochemistry analysis of paraffin embedded Human liver cancer tissue using 217837(SNAI3 Antibody) at a dilution of 1/25(Cytoplasm).



In comparison with the IHC on the left, the same paraffin-embedded Human liver cancer tissue is first treated with the fusion protein and then with 217837(Anti-SNAI3 Antibody) at dilution 1/25.