

## SMYD3 RABBIT MAB

**Cat.#:** N262915

**Product Name:** Anti-SMYD3 Rabbit Monoclonal Antibody

**Synonyms:** KMT3E; ZMYND1; ZNFN3A1; bA74P14.1

**UNIPROT ID:** Q9H7B4

**Background:** Histone methyltransferase. Specifically methylates 'Lys-4' of histone H3, inducing di- and tri-methylation, but not monomethylation. Plays an important role in transcriptional activation as a member of an RNA polymerase complex. Binds DNA containing 5'-CCCTCC-3' or 5'-GAGGGG-3' sequences.

**Immunogen:** A synthetic peptide of human SMYD3

**Applications:** WB,IHC-F,IHC-P,ICC/IF,IP

**Recommended Dilutions:** WB: 1/500-1/1000 IHC: 1/50-1/100 IF: 1/50-1/200 IP: 1/20

**Host Species:** Rabbit

**Clonality:** Rabbit Monoclonal

**Clone ID:** R03-217

**MW:** Calculated MW: 49 kDa; Observed MW: 49 kDa

**Isotype:** IgG

**Purification:** Affinity Purified

**Species Reactivity:** Human

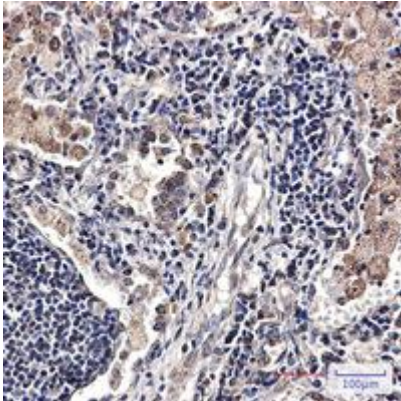
**Conjugation:** Unconjugated

**Modification:** Unmodified

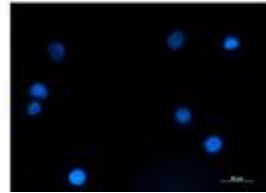
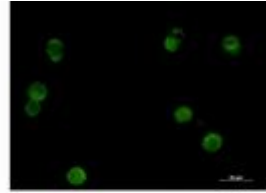
**Constituents:** PBS (without Mg<sup>2+</sup> and Ca<sup>2+</sup>), pH 7.3 containing 50% glycerol, 0.5% BSA and 0.02% sodium azide

**Research Areas:** Epigenetics and Nuclear Signaling

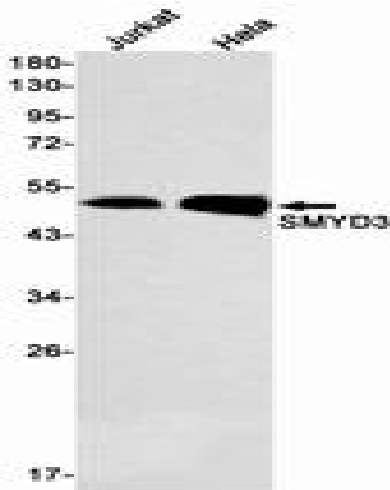
**Storage & Shipping:** Store at -20°C. Avoid repeated freezing and thawing



Immunohistochemistry analysis of paraffin-embedded Human lung cancer tissue using SMYD3 antibody. High-pressure and temperature Sodium Citrate pH 6.0 was used for antigen retrieval.



Immunocytochemistry analysis of SMYD3 (green) in K562 using SMYD3 antibody, and DAPI (blue).



Western blot analysis of SMYD3 in Jurkat, HeLa lysates using SMYD3 antibody.