

SMN RABBIT MAB

Cat.#: N262270

Product Name: Anti-SMN Rabbit Monoclonal Antibody

Synonyms: SMN1; SMN; SMNT; SMN2; SMNC; Survival motor neuron protein; Component of gems 1; Gemin-1

UNIPROT ID: Q16637

Background: The SMN complex plays an essential role in spliceosomal snRNP assembly in the cytoplasm and is required for pre-mRNA splicing in the nucleus. It may also play a role in the metabolism of snoRNPs.

Immunogen: A synthetic peptide of human Gemin 1

Applications: WB, ICC/IF

Recommended Dilutions: WB: 1/500-1/1000 IF: 1/50-1/200

Host Species: Rabbit

Clonality: Rabbit Monoclonal

Clone ID: R05-3B5

MW: Calculated MW: 32 kDa; Observed MW: 35 kDa

Isotype: IgG

Purification: Affinity Purified

Species Reactivity: Human

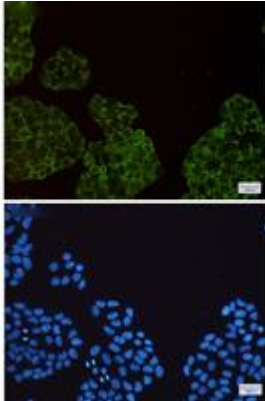
Conjugation: Unconjugated

Modification: Unmodified

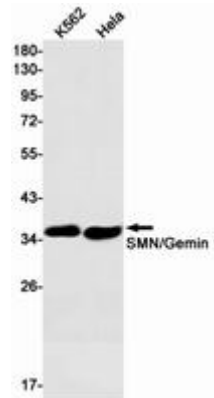
Constituents: PBS (without Mg²⁺ and Ca²⁺), pH 7.3 containing 50% glycerol, 0.5% BSA and 0.02% sodium azide

Research Areas: Neuroscience

Storage & Shipping: Store at -20°C. Avoid repeated freezing and thawing



Immunocytochemistry analysis of Gemin 1 (green) in HeLa using Gemin 1 antibody, and DAPI (blue)



Western blot analysis of SMN/Gemin 1 in K562, HeLa lysates using SMN antibody.