

SMARCC1 RABBIT MAB

Cat.#: N262913

Product Name: Anti-SMARCC1 Rabbit Monoclonal Antibody

Synonyms: BAF155; CRACC1; Rsc8; SMARCC1; SRG3; SWI3

UNIPROT ID: Q92922

Background: Involved in transcriptional activation and repression of select genes by chromatin remodeling (alteration of DNA-nucleosome topology). May stimulate the ATPase activity of the catalytic subunit of the complex.

Immunogen: A synthetic peptide of human SMARCC1

Applications: WB,ICC/IF,IP

Recommended Dilutions: WB: 1/500-1/1000 IF: 1/50-1/200 IP: 1/20

Host Species: Rabbit

Clonality: Rabbit Monoclonal

Clone ID: R07-6K6

MW: Calculated MW: 123 kDa; Observed MW: 155 kDa

Isotype: IgG

Purification: Affinity Purified

Species Reactivity: Human,Rat

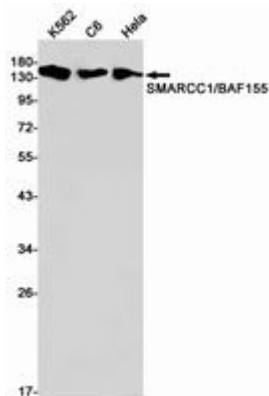
Conjugation: Unconjugated

Modification: Unmodified

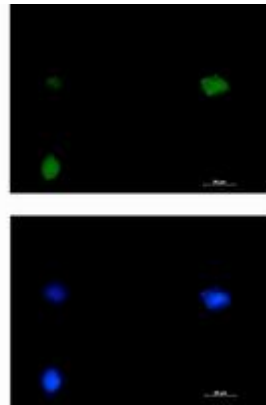
Constituents: PBS (without Mg²⁺ and Ca²⁺), pH 7.3 containing 50% glycerol, 0.5% BSA and 0.02% sodium azide

Research Areas: Epigenetics and Nuclear Signaling

Storage & Shipping: Store at -20°C. Avoid repeated freezing and thawing



Western blot analysis of SMARCC1/BAF155 in K562, C6, HeLa lysates using SMARCC1/BAF155 antibody.



Immunocytochemistry analysis of SMARCC1 (green) in HT-1080 using SMARCC1 antibody, and DAPI (blue).