

SMARCB1 RABBIT MAB

Cat.#: N262919

Product Name: Anti-SMARCB1 Rabbit Monoclonal Antibody

Synonyms: SMARCB1; BAF47; hSNF5; INI1; RDT; RTPS1; Sfh1p; SMARCB1; SNF5 homolog; SNF5L1; Snr1; SWI/SNF comp

UNIPROT ID: Q12824

Background: The SWI-SNF complex is involved in the activation of transcription via the remodeling of nucleosome structure in an ATP-dependent manner. Brm (also designated SNF2 α) and Brg-1 (also designated SNF2 β) are the ATPase subunits of the mammalian SWI-SNF complex.

Immunogen: Recombinant protein of human SNF5

Applications: WB,IHC-F,IHC-P,ICC/IF,IP

Recommended Dilutions: WB: 1/500-1/1000 IHC: 1/50-1/100 IF: 1/50-1/200 IP: 1/20

Host Species: Rabbit

Clonality: Rabbit Monoclonal

Clone ID: R07-5C7

MW: Calculated MW: 44 kDa; Observed MW: 44 kDa

Isotype: IgG

Purification: Affinity Purified

Species Reactivity: Human,Mouse

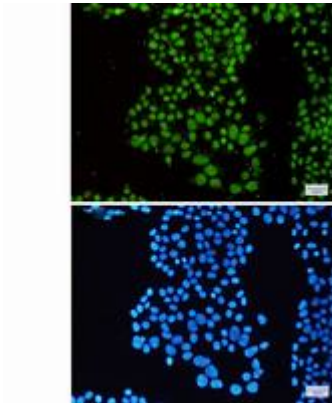
Conjugation: Unconjugated

Modification: Unmodified

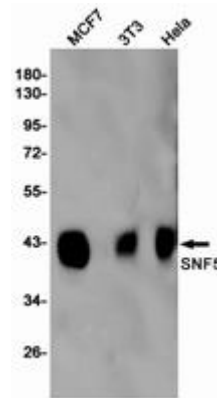
Constituents: PBS (without Mg²⁺ and Ca²⁺), pH 7.3 containing 50% glycerol, 0.5% BSA and 0.02% sodium azide

Research Areas: Epigenetics and Nuclear Signaling

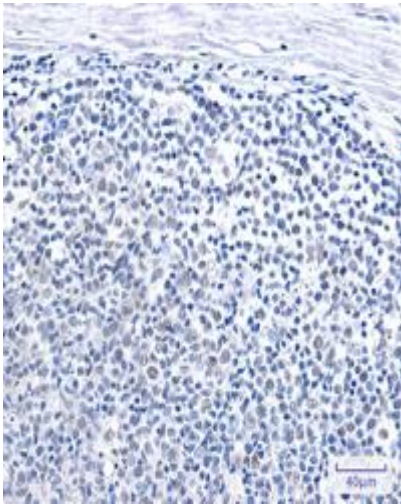
Storage & Shipping: Store at -20°C. Avoid repeated freezing and thawing



Immunocytochemistry analysis of SNF5 (green) in HeLa using SNF5 antibody, and DAPI (blue)



Western blot analysis of SNF5 in MCF-7, 3T3, HeLa lysates using SMARCB1 antibody.



Immunohistochemistry analysis of paraffin-embedded Human tonsil using SNF5 antibody. High-pressure and temperature Sodium Citrate pH 6.0 was used for antigen retrieval.